



SPYKE™

2021

SPYKE™

FEEL THE SPEED
SPYKE.IT



4 RACE



TOUR CODE



CONTEMPORARY

**Non siamo più solo in pista.
Siamo nei tre mondi di Spyke.**

4 Race, Tour Code, Contemporary. We are no longer only on track, we are in the three Spyke worlds.

Chiunque tu sia, qualunque cosa tu faccia e qualunque moto guidi, esplora il mondo di SPYKE. Ti presentiamo la collezione 2020 ispirata dalla nostra storia di oltre quarant'anni di passione ed esperienza nel Motosport. Ci mettiamo l'anima per costruire capi d'abbigliamento da moto sicuri, confortevoli e dall'aspetto entusiasmante.

Tenendo ben presente l'importante eredità ricevuta dai GRANDI PILOTI con cui abbiamo avuto il privilegio di collaborare negli anni, ti invitiamo a far parte di questa storia...

Distinguiti in circuito.

Viaggia verso l'ignoto con qualunque condizione atmosferica.

Muoviti agilmente in città con stile.

Whoever you are, whatever you do and whatever you ride - explore the world of SPYKE. We present you the 2020 collection inspired by the heritage and 40 years of knowledge, passion and experience in sport. We put all our effort to create a motorcycle garment which is safe, comfortable and awesome looking. Having in mind the legacy of BIG NAMES, we invite you to become a part of this history. So...

Be a star on the racetrack.

Travel into the unknown whatever the weather.

Rush through the city.

#jointherace and #feelthespeed

* Product specifications are subject to change without notice.

06 RACING 1PC LEATHER SUITS

08	110102	ARAGON RACE	14	110162	ASSEN RACE 2.0
12	110161	LOSAIL RACE	15	110156	ESTORIL RACE

19 SPORT 2PC LEATHER SUITS

20	110261	ASSEN SPORT 2.0	24	110253	ESTORIL SPORT LADY
22	110252	ESTORIL SPORT			

26 SPORT LEATHER JACKETS

28	110310	ARAGON EVO	32	110359	JEREZ EVO
30	110320	ESTORIL EVO	33	110363	IMOLA EVO 2.0

34 LEATHER PANTS

36	110415	LF SLIDER PANTS	39	110417	LF PANTS LADY
38	110416	LF PANTS			

40 DRY TECNO FABRIC SPORT JACKETS

42	120630	ARAGON GT DRY TECNO	44	120631	ESTORIL GT DRY TECNO
43	120640	DAYTONA DRY TECNO SPORT			

46 TEXTILE SPORT JACKETS

49	120632	ESTORIL GT
----	--------	------------

50 SPORT & SHORT GLOVES

52	130964	TECH PRO	56	130968	TECH SPORT VENTED LADY
54	130965	TECH RACE	57	131030	TECH SHORT
55	130967	TECH SPORT VENTED			

58 DRY TECNO FABRIC TOURING / ADV JACKETS

60	120520	EQUATOR DRY TECNO	64	120552	EVERGLADE DRY TECNO 2.0 LADY
62	120530	EQUATOR DRY TECNO LADY	65	120540	MERIDIAN DRY TECNO
63	120553	EVERGLADE DRY TECNO 2.0			

68 WATERRESISTANT & WINDBREAKING VENTED TEXTILE TOURING JACKETS

69	120683	TOURING AIR GT-2
----	--------	------------------

70 VENTED TEXTILE JACKETS

72	120650	AIRMASTER	77	120687	LUFT MAN 2.0
74	120651	AIRMASTER LADY			

78 DRY TECNO FABRIC TOURING / ADV PANTS

80	120720	EQUATOR DRY TECNO PANTS	83	120752	EVERGLADE DRY TECNO 2.0 PANTS LADY
81	120730	EQUATOR DRY TECNO PANTS LADY	84	120742	MERIDIAN DRY TECNO PANTS
82	120753	EVERGLADE DRY TECNO 2.0 PANTS	85	120726	BREVA DRY TECNO

87 SUMMER VENTED TEXTILE PANTS

88	120725A	BORA 2
----	---------	--------

89 WATERPROOF GLOVES

90	131040	LATITUDE DRY TECNO	94	131036	TOURING 2 DRY TECNO LADY
91	131041	IGNIS DRY TECNO	95	131042	COMMUTER DRY TECNO
92	131032	TOURING 2 DRY TECNO			

65 DAKAR™ OFFICIAL PRODUCTS

100 CRUISER, CAFE RACER & URBAN LEATHER JACKET

102	110360	STRIPE GP 2 MAN	109	110345	MILANO 2.0 LADY
103	110361	STRIPE GP 2 LADY	110	110389	TENACY R2 MAN
104	110341	RIDE LADY	111	110390	TENACY R2 LADY
106	110344	MILANO 2.0 MAN			

112 TEXTILE SPORT JACKETS

114	120610	RIDER SUMMER GT	115	120611	RIDER SUMMER GT LADY
-----	--------	-----------------	-----	--------	----------------------

116 CONTEMPORARY JACKETS

117	170604	RIDER SUMMER GT
-----	--------	-----------------

118 CONTEMPORARY FASHION RIDING GLOVES

120	131018	BIARRITZ DRY TECNO	123	131019	BIARRITZ VENTED 2.0
121	131016	BIARRITZ			

124 APPAREL

126	142001	LEG BAG	128	142003	AERO
127	142002	AQUA	129	142004	URBEX

130 ACCESSORIES

134 TECH FEATURES / ICONS / SIZE CHART

142 INDEX

RACING IPC LEATHER SUITS

4RACE



RACING 1PC LEATHER SUITS
ARAGON RACE 110102

4RACE MAN

38 | 40 | 42 | 44 | 46 | 48 | 50 | 52 | 54 | 56 | 58 | 60 | 62



TOP OF THE RANGE

For those about to race.

Kangaroo leather for maximum strenght and comfort. CE certified protectors, aggresive sliders and pocket for camel bag.



Color variations

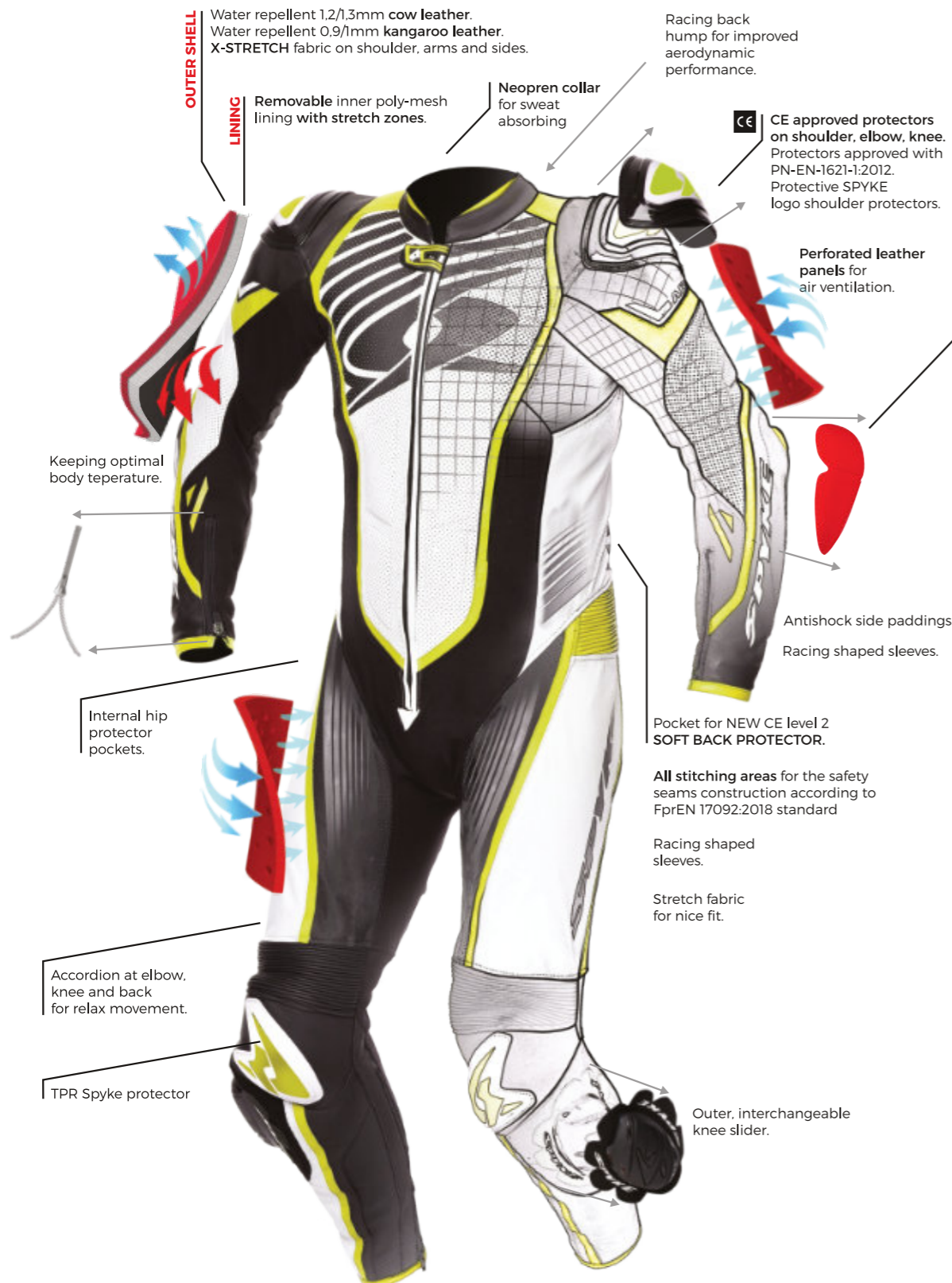


Materials

Water repellent 1,2/1,3mm cow leather. Waterrepellent 0,9/1mm kangaroo leather. Stretch fiber inserts. X-STRETCH fabric on shoulder, arms and sides. Removable inner poly-mesh lining with stretch zones.

Technical Solutions

CE approved protectors on shoulder, elbow, knee. Outer, interchangeable elbow slider. Protectors approved with PN-EN-1621-1:2012. Protective SPYKE logo shoulder protectors. Pocket for NEW CE level 2 SOFT BACK PROTECTOR. Antishock side paddings. All stitching areas for the safety seams construction according to FprEN 17092:2018 standard. Internal hip protector pockets. Kangaroo leather inserts on: shoulders, sleeves, sides, leg. Perforated leather on front and back area, sleeves and legs. Racing back hump for improved aerodynamic performance. Racing shaped sleeves. Accordion at elbow, knee and back for relax movement. Zip fastener on sleeves and bottom legs with "flat lock" system (autolocking & anti-floating slider). Neoprene at collar for sweat absorbing. Stretch fabric for nice fit. Pocket with hole on back for Hydropack. Perforated leather panels for air ventilation. Reflective zones. 1 inner pocket. Removable lining. Removable knee sliders. Sliders included.



OUTER SHELL
Water repellent 1,2/1,3mm cow leather.
Water repellent 0,9/1mm kangaroo leather.
X-STRETCH fabric on shoulder, arms and sides.

LINING
Removable inner poly-mesh lining with stretch zones.

Neopren collar for sweat absorbing

Racing back hump for improved aerodynamic performance.

CE approved protectors on shoulder, elbow, knee. Protectors approved with PN-EN-1621-1:2012. Protective SPYKE logo shoulder protectors.

Perforated leather panels for air ventilation.

Keeping optimal body teperature.

Antishock side paddings.
Racing shaped sleeves.

Internal hip protector pockets.

Pocket for NEW CE level 2 SOFT BACK PROTECTOR.

All stitching areas for the safety seams construction according to FprEN 17092:2018 standard

Racing shaped sleeves.

Stretch fabric for nice fit.

Accordion at elbow, knee and back for relax movement.

TPR Spyke protector

Outer, interchangeable knee slider.

SPYKE™
ARAGON RACE
ZERO BLACK LINE

ZERØ BLACK





SPYKE™
LOSAIL RACE



This product is CE Certified.

SPYKE

4RACE MAN

38 | 40 | 42 | 44 | 46 | 48 | 50 | 52 | 54 | 56 | 58 | 60 | 62



One piece racing suit for riders who need comfort and safety both in one suit

Cowhide suit equipped with many protectors to provide best safety level available. Back hump for best aerodynamic. Many accordion and elastic inserts as well as perforated panels to ensure high comfort.



Color variations



BLK/WHT
10102



BLK/WHT/FLUOYELLOW
10107

Materials

Water-repellent 1,2/1,3 mm cow leather. Stretch fiber insert. Fixed inside poly-mesh lining with stretch zones.

Technical Solutions

Premium cow hide outer shell construction. · Soft fix mesh interior lining with document pocket. · Protective Spyke logo shoulder and knee protectors. · Aerodynamic speed hump. · Perforated panels for air ventilation. · Stretch fabric for better fit nylon front opening zipper. · Auto lock zippers at sleeves nylon zippers on legs easy to wear. · Accordion at elbow, knee and back part for easy movement. · CE approved Safe Tech shoulder, elbow and knee protectors. · Padding at crucial areas. · Spyke logo buttons. · Removable knee sliders. · Protectors approved with PN-EN-1621-1:2012

RACING 1PC LEATHER SUITS
ASSEN RACE 2.0
110162

One piece racing comfortable suit providing best safety level

Revisited version of Assen Race. Now even more user friendly thanks to increased breathability and ventilation

4RACE
MAN

38 | 40 | 42 | 44 | 46 | 48 | 50 | 52 | 54 | 56 | 58 | 60 | 62



Color variations



BLK/FLUOYELLOW/FLUORED
10165



BLK/WHT
10102



WHT/BLK
10201



WHT/BLK/FLUORED
10232

Materials

Water repellent 1,2/1,3mm cow leather. Stretch fiber inserts. X-STRETCH fabric on shoulder, arms and sides. Fixed inside poly-mesh lining with stretch zones.

Technical Solutions

CE approved shoulder protectors, ergonomically optimized, interchangeable. CE approved protectors on shoulder, elbow, knee. Protectors approved with PN-EN-1621-1:2012. Protective SPYKE logo shoulder protectors. Pocket for NEW CE level 2 SOFT BACK PROTECTOR. Antishock side paddings. All stitching areas for the safety seams construction according to FprEN 17092:2018 standard. Premium cow hide outer shell construction. Perforated leather on front and back area, sleeves and legs. Racing back hump for improved aerodynamic performance. Racing shaped sleeves. Accordion at elbow, knee and back for relax movement. Zip fastener on sleeves and bottom legs with "flat lock" system (autolocking & anti-floating slider). Neoprene ankle and wrist cuffs. Neoprene at collar for sweat absorbing. Stretch fabric for nice fit. Perforated leather panels for air ventilation. 2 inner pockets. Removable knee sliders. Sliders included.

RACING 1PC LEATHER SUITS
ESTORIL RACE
110156

Be noticed and be safe on the track

Match your look with this suit. Be safe thanks to CE certified protectors. This is what we consider to be racing in style.

4RACE
MAN

38 | 40 | 42 | 44 | 46 | 48 | 50 | 52 | 54 | 56 | 58 | 60 | 62



ZERO BLACK
10000



BLACK(WHITE)ORANGE
10114



BLK/WT/FLUORED
10135



BLK/WHT/FLUOYELLOW
10107



WHT/BLK/GOLD
10111

Materials

Water repellent 1,2/1,3mm buffalo leather. Stretch fiber inserts. X-STRETCH fabric on shoulders, arms and sides. Removable inner poly-mesh lining with stretch zones.

Technical Solutions

CE approved protectors on shoulder, elbow, knee. Protectors approved with PN-EN-1621-1:2012. Protective SPYKE logo shoulder protectors. Pocket for NEW CE level 2 SOFT BACK PROTECTOR. All stitching areas for the safety seams construction according to FprEN 17092:2018 standard. Perforated leather on front, back, sleeves and legs. Racing back hump for improved aerodynamic performance. Racing shaped sleeves. Accordion at elbow, knee and back for relax movement. Zip fastener on sleeves and bottom legs with "flat lock" system (autolocking & anti-floating slider). Neoprene ankle and wrist cuffs. Neoprene at collar for sweat absorbing. Stretch fabric for nice fit. Perforated leather panels for air ventilation. 1 inner pocket. Removable lining. Removable knee sliders. Sliders included.

SPYKE™
ESTORIL RACE
ZERO BLACK LINE

ZERO BLACK



4RACE



**SPORT
2PC
LEATHER
SUITS**

SPYKE™
ASSEN SPORT 2.0



This product is CE Certified.

SPYKE™

4RACE MAN

38 | 40 | 42 | 44 | 46 | 48 | 50 | 52 | 54 | 56 | 58 | 60 | 62



SPORT 2PC LEATHER SUITS ASSEN SPORT 2.0 110261

Comfortable two pieces racing suit

Two piece version of one of the best racing suits. Versatile and super ventilated for maximum comfort.



Color variations



BLK/WHT
10102



BLK/WT/FLUOYELLOW
10107



WHT/BLK/FLUORED
10232

Materials

Water repellent 1,2/1,3mm cow leather. Stretch fiber inserts. X-STRETCH fabric on shoulder, arms and sides. Fixed inside poly-mesh lining with stretch zones.

Technical Solutions

CE approved shoulder protectors, ergonomically optimized, interchangeable. CE approved protectors on shoulder, elbow, knee. Protectors approved with PN-EN-1621-1:2012. Protective SPYKE logo shoulder protectors. Pocket for NEW CE level 2 SOFT BACK PROTECTOR. Antishock side paddings. All stitching areas for the safety seams construction according to FprEN 17092:2018 standard. Perforated leather on front, back, sleeves and legs. Racing back hump for improved aerodynamic performance. Racing shaped sleeves. Accordion at elbow, knee and back for relax movement. Zip fastener on sleeves and bottom legs with "flat lock" system (autolocking & anti-floating slider). Neoprene ankle and wrist cuffs. Neoprene at collar for sweat absorbing. Stretch fabric for nice fit. Perforated leather panels for air ventilation. 2 inner pockets. Removable knee sliders. Sliders included. Connecting zipper.



SPYKE™
ESTORIL SPORT



This product is CE Certified.

SPYKE

4RACE MAN

38 | 40 | 42 | 44 | 46 | 48 | 50 | 52 | 54 | 56 | 58 | 60 | 62



Match your look with this versatile racing suit

On the bike you have to look good. If you're a fan of 2 piece racing suits, this is an answer to all your needs.



Color variatic



ZERO BLACK
10000



BLACK\WHITE ORANGE
10114



BLK\WHT\FLUORED
10135



BLK\FLUOYELLOW
10164



BLACK\WHITE
10102



WHT\BLK\FLUORED
10232

Materials

Water repellent 1,2/1,3mm buffalo leather. Stretch fiber inserts. X-STRETCH fabric on shoulder, arms and sides. Fixed inside poly-mesh lining with stretch zones.

Technical Solutions

CE approved protectors on shoulder, elbow, knee. Protectors approved with PN-EN-1621-1:2012. Protective SPYKE logo shoulder protectors. Pocket for NEW CE level2SOFT BACK PROTECTOR. Antishock side paddings. Allstitching areas for the safety seams construction according to FprEN 17092: 2018 standard. Perforated leather on front and back area, sleeves and legs. Racing back hump for improved aerodynamic performance. Racing shaped sleeves. Accordion at elbow, knee and back for relax movement. Zip fastener on sleeves and bottom legs with "flat lock" system (autolocking & anti-floating slider). Auto lock zippers on sleeves. Neoprene ankle and wrist cuffs. Neoprene at collar for sweat absorbing. Stretch fabric for nice fit. Perforated leather panels for air ventilation. Velcro waist adjustment. 1 inner pocket. Removable knee sliders. Sliders included. Connecting zipper.

SPYKE™
ESTORIL SPORT
LADY



This product is CE Certified.

SPYKE™

4RACE WOMAN

38 | 40 | 42 | 44 | 46 | 48 | 50 | 52 | 54 | 56 | 58 | 60 | 62



SPORT 2PC LEATHER SUITS ESTORIL SPORT LADY 110253

Ladies racers more than welcome for this 2-piece racing suit

Perfectly shaped to make you look awesome on yourbike. Extremely comfortable, designed, tested and used by women.



Color variations



ZERO BLACK
10000



BLK/WHT/FLUORED
10135



BLK/WHT/GOLD
10111

Materials

Water repellent 1,2/1,3mm buffalo leather. Stretch fiber inserts. X-STRETCH fabric on shoulder, arms and sides. Fixed inside poly-mesh lining with stretch zones.

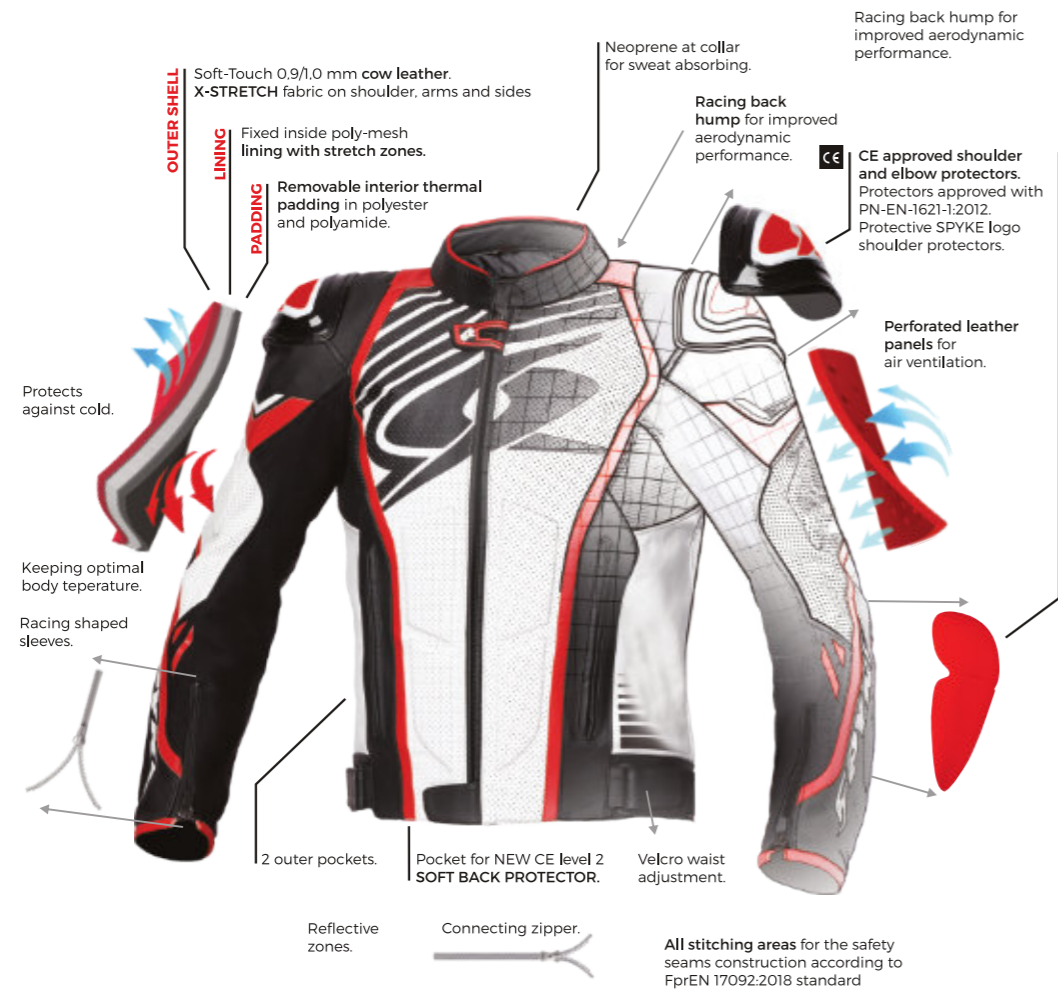
Technical Solutions

CE approved protectors on shoulder, elbow, knee. Protectors approved with PN-EN-1621-1:2012 Protective SPYKE logo shoulder protectors. Pocket for NEW CE level2SOFT BACK PROTECTOR. Antishock side paddings. Allstitching areas for the safety seams construction according to FprEN 17092 : 2018 standard. Perforated leather on front and back area, sleeves and legs. Racing shaped sleeves. Accordion at elbow, knee and back for relax movement. Zip fastener on sleeves and bottom legs with "flat lock" system (autolocking & anti-floating slider). Auto lock zippers on sleeves. Neoprene ankle and wrist cuffs. Neoprene at collar for sweat absorbing. Stretch fabric for nice fit. Perforated leather panels for air ventilation. Velcro waist adjustment. 1 inner pocket. Fit for Lady. Removable knee sliders. Sliders included. Connecting zipper.

SPORT LEATHER JACKETS

4RACE





SPORT LEATHER JACKET
ARAGON EVO
110310

Quintessence of racing leather jacket.

Racing jacket for the track and city. Aerodynamic hump makes it universal solution.

4RACE
MAN

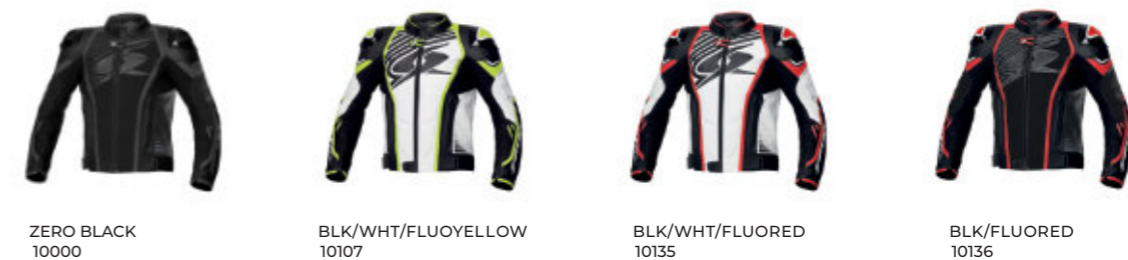
38 | 40 | 42 | 44 | 46 | 48 | 50 | 52 | 54 | 56 | 58 | 60 | 62



SPYKE™
ARAGON EVO



Color variations



Materials

Soft-Touch 0,9/1,0mm cow leather. Stretch fiber inserts. X-STRETCH fabric on shoulder, arms and sides. Fixed inside poly-mesh lining with stretch zones. Removable interior thermal padding in polyester and polyamide.

Technical Solutions

CE approved shoulder and elbow protectors. Outer, interchangeable elbow slider Protectors approved with PN-EN-1621-1:2012. Protective SPYKE logo shoulder protectors. Pocket for NEW CE level 2 SOFT BACK PROTECTOR. All stitching areas for the safety seams construction according to FprEN 17092:2018 standard. Premium cow hide outer shell construction. X-STRETCH panels on sides and inner sleeves. Racing back hump for improved aerodynamic performance. Racing shaped sleeves. Accordion inserts on elbow and back. Auto lock zippers on sleeves. Neoprene at collar for sweat absorbing. 2 outer pockets. Perforated leather panels for air ventilation. Velcro waist adjustment. Reflective zones. Thermal removable quilt liner with mobile and document pocket. 1 inner pocket. Connecting zipper.

SPYKE™
ESTORIL EVO



This product is CE Certified.

SPYKE

4RACE MAN

38 | 40 | 42 | 44 | 46 | 48 | 50 | 52 | 54 | 56 | 58 | 60 | 62



SPORT LEATHER JACKET ESTORIL EVO 110320

Emerge from the crowd with this powerful design

Universal jacket to ride your bike. Take it to the street or for casual racing. Looks good, feels good.



Color variations



ZERO BLACK
10000



BLK/FLUORED
10134



BLK/FLUOYELLOW
10107

Materials

2 in 1 jacket. Soft-Touch 0,9/1,0 mm buffalo leather. Stretch fiber inserts. X-STRETCH fabric on shoulder, arms and sides. Fixed inside poly-mesh lining with stretch zones. Removable interior thermalpadding in polyester and polyamide.

Technical Solutions

CE approved shoulder and elbow protectors. Protectors approved with PN-EN-1621-1:2012. Pocket for NEW CE level 2 SOFT BACK PROTECTOR. All stitching areas for the safety seams construction according to FprEN 17092:2018 standard. X-STRETCH panels on sides and inner sleeves. Racing back hump for improved aerodynamic performance. Racing shaped sleeves. Accordion inserts on elbow and back. Auto lock zippers on sleeves. Neoprene ankle and wrist cuffs. Neoprene at collar for sweat absorbing. 2 outer pockets. Perforated areas front, back and sleeves for better breathability. Perforated leather panels for air ventilation. Velcro waist adjustment. Thermal removable quilt liner with mobile and document pocket. Connecting zipper.

SPORT LEATHER JACKET
JEREZ EVO
110359

Very comfortable cow hide jacket with thermal liner

X-STRETCH fabric on shoulders, arms and sides and accordion inserts ensure comfort. Two air vents at front and one at back allow your body to breathe. Removable thermal liner included.



4RACE
MAN

38 | 40 | 42 | 44 | 46 | 48 | 50 | 52 | 54 | 56 | 58 | 60 | 62



SPORT LEATHER JACKET
IMOLA EVO 2.0
110363

Very comfortable cow hide jacket with thermal liner

Redesigned version of awesome racing jacket. Now with increased number of ventilation panels to make your ride more comfortable.



4RACE
MAN

38 | 40 | 42 | 44 | 46 | 48 | 50 | 52 | 54 | 56 | 58 | 60 | 62



Color variations



BLK/WHT
10102

BLK/WHT/BLUE
12702

BLK/WHT/FLUOYELLOW
10107

Materials

Soft-Touch 0,9/1,0 mm cow leather. X-STRETCH fabric on shoulder, arms and sides. Inside fixed poly lining. Removable interior thermal padding in polyester and polyamide

Technical Solutions

Premium cow hide outer shell construction. Soft fix mesh interior lining. Thermal removable quilt liner with mobile and document pocket. Stretch fabric for nice fit. Nylon front opening zipper. Auto lock zippers on sleeves. Hand warming pockets. Two air vents at front and one at back for air ventilation. Standard connection zip. Padding at crucial areas. Accordion at shoulder back for easy movement. Spkye logo buttons. CE approved shoulder and elbow protectors. Protectors approved with PN-EN-1621-1:2012

Color variations



BLK/WHT/RED
10231

BLK/WHT/FLUOYELLOW
10197

BLK/WHT/BLUE
12702

BLK/WHT/ANT
10110

BLACK
10101

Materials

Soft-Touch 0,9/1,0 mm cow leather. Stretch fiber inserts. X-STRETCH fabric on shoulder, arms and sides. Fixed inside poly-mesh lining with stretch zones. Removable interior thermal padding in polyester and polyamide.

Technical Solutions

CE approved shoulder and elbow protectors. Protectors approved with PN-EN-1621-1:2012. Pocket for NEW CE level 2 SOFT BACK PROTECTOR. All stitching areas for the safety seams construction according to FprEN 17092:2018 standard. Premium cow hide outer shell construction. X-STRETCH panels on sides and inner sleeves. Racing shaped sleeves. Auto lock zippers on sleeves. Neoprene at collar for sweat absorbing. 2 outer pockets. Air vents at front and at back Perforated leather panels for air ventilation. Velcro waist adjustment. Thermal removable quilt liner with mobile and document pocket. 1 inner pocket. SPYKE logo buttons. Connecting zipper.

4RACE

**LEATHER
PANTS**



SPYKE™
LF SLIDER PANTS

LEATHER PANTS
LF SLIDER PANTS
110415

Comfortable racing pants with seamless construction parts

Seamless friction areas construction and X-STRETCH fabric inserts provide best comfort of use. Ventilation system is ensured by perforated front and back zones. Removable CE-approved knee and shin protectors care about the rider's safety.

4RACE
MAN

38 | 40 | 42 | 44 | 46 | 48 | 50 | 52 | 54 | 56 | 58 | 60 | 62



Color variations



BLACK
10101



BLK/WHT
10102

Materials

1,0/1,1 mm cow leather. Inside fixed poly-mesh lining.

Technical Solutions

Dynamic seamless construction on friction areas on pant and inside lining. · Shock absorbing side paddings. · Leather flex zones on waist and knees and high-strength X-STRETCH fabric on inguinal area, thighs, calves and groins. · Perforated areas front and back for better breathability. · Removable CE approved knee and shin protectors. · Waist zip connection to jacket. · Knee sliders included. · 2 external pockets. · Protectors approved with PN-EN-1621-1:2012

LF PANTS
LF PANTS
110416

Super comfortable pants for safe racing

Seamless friction areas construction and X-STRETCH fabric inserts provide best comfort of use. Removable CE-approved knee and shin protectors care about the rider's safety. Dual zip bottom closure makes it possible to wear the boots both under and above the pants.



Color variations



BLACK
10101

Materials

0,9/1,0 mm cow leather. Inside fixed poly-mesh lining.

Technical Solutions

Dynamic seamless construction on friction areas on pant and inside lining. · Shock absorbing side paddings. · Flex zones on waist and knees, highstrength X-STRETCH fabric on crotch area, thighs, calves and groins. · High-strength fabric inserts for a better comfort. · Removable CE approved knee and shin protectors. · Waist zip connection system to jacket. · Dual zip bottom closure to wear the pant both inside and outside the boot. · Protectors approved with PN-EN-1621-1:2012

LEATHER PANTS
LF PANTS LADY
110417

Racing leather lady pants for women who want more

Best comfort level by usage of X-STRETCH fabric on many areas and seamless friction areas construction. Removable CE-approved protectors of shin and knee. Possibility of wearing the pants inside and outside the boots.



Color variations



BLACK
10101

Materials

0,9/1,0 mm cow leather. Inside fixed poly-mesh lining.

Technical Solutions

Fit for lady. · Dynamic seamless construction on friction areas on pant and inside lining. · Shock absorbing side paddings. · Flex zones on waist and knees, highstrength X-STRETCH fabric on crotch area, thighs, calves and groins. · Highstrength fabric inserts for a better comfort. · Removable CE approved knee and shin protectors. · Waist zip connection system to jacket. · Dual zip bottom closure to wear the pant both inside and outside the boot. · Protectors approved with PN-EN-1621-1:2012

4RACE
MAN

38 | 40 | 42 | 44 | 46 | 48 | 50 | 52 | 54 | 56 | 58 | 60 | 62



4RACE
WOMAN

38 | 40 | 42 | 44 | 46 | 48 | 50 | 52 | 54 | 56 | 58 | 60 | 62



DRY TECNO FABRIC SPORT JACKETS

4RACE



DRY TECNO FABRIC SPORT JACKETS
**ARAGON GT DRY TECNO
120630**

Ultimate racing textile jacket.

Functional and good looking jacket for any weather conditions. Thermal liner, pockets and connecting zipper make it perfect for faster and slower riding.



**4RACE
MAN**

38 | 40 | 42 | 44 | 46 | 48 | 50 | 52 | 54 | 56 | 58 | 60 | 62



DRY TECNO FABRIC SPORT JACKETS
**DAYTONA DRY TECNO SPORT
120640**

Racing fabric jacket best for riding in any weather conditions

600D polyester Maxtex and Teflon used provide best safety level, as well as CE-approved protectors of shoulder and elbow. Back is safe thanks to perforated foam pad. Removable thermal liner and waterproof and breathable membrane made the jacket best for riding in any weather conditions.



**4RACE
MAN**

38 | 40 | 42 | 44 | 46 | 48 | 50 | 52 | 54 | 56 | 58 | 60 | 62



Color variations



ZERO BLACK
10000

BLK/RED
10134

BLK/WHT/FLUOYELLOW
10107

BLK/WHT/RED
10133

Materials

3 in 1 jacket. Outer shell - 100% polyester 600D. Removable Humax 20000 membrane. Removable thermal lining.

Technical Solutions

CE approved shoulder and elbow protectors. Protectors approved with PN-EN-1621-1:2012. Protective SPYKE logo shoulder protectors. Pocket for NEW CE level 2 SOFT BACK PROTECTOR. All stitching areas for the safety seams construction according to FprEN 17092:2018 standard. X-STRETCH panels on sides and inner sleeves. Racing shaped sleeves. Accordion inserts on elbow and back. Autolock zippers on sleeves. Neoprene at collar for sweat absorbing. 2 outer pockets. Adjustable waist with strap and velcro. Reflective zones on sleeves, front and back. Removable interior membrane. Removable thermal lining. 1 inner pocket. Connecting zipper.

Color variations



BLK/WHT
10110

BLK/FLUORED
10133

BLK/FLUOYELLOW
10107

Materials

External fabric and reinforcements 100% high-strength 600D polyester and Teflon® treatment. Inner fixed poly lining. Removable in-ner thermal padding in polyester. Fixed inner membrane waterproof and breathable.

Technical Solutions

Polyester Maxtex 600D outer shell construction. - Fix polyester micro mesh interior lining with document pocket. - Thermal removable quilt liner with mobile and document pocket. - Coil front opening zipper, waist and cuff. - Accordion at elbow and shoulder back for easy movement. - Waist adjustable belts. - Neopren at collar for sweat absorbing standard connection zipper. - CE approved shoulder and elbow protectors, back normal perforated foam pad. - Protectors approved with PN-EN-1621-1:2012



CE
This product is CE Certified.

SPYKE™

DRY TECNO FABRIC SPORT JACKETS
**ESTORIL GT DRY TECNO
120631**

**4RACE
MAN**

38 | 40 | 42 | 44 | 46 | 48 | 50 | 52 | 54 | 56 | 58 | 60 | 62

Feel the speed, no matter the weather



Perfect solution for colder and rainy days. Do not give up racing style because of the weather.



Color variations



ZERO BLACK
10000



BLK/RED
10134

Materials

2 in 1 jacket. Outer shell - 100% polyester 600D. Removable HUMAX 20000 waterproof membrane fixed with thermal lining.

Technical Solutions

CE approved shoulder and elbow protectors. Protectors approved with PN-EN-1621-1:2012. Pocket for NEW CE level 2 SOFT BACK PROTECTOR. All stitching areas for the safety seams construction according to FprEN 17092:2018 standard. X-STRETCH panels on sides and inner sleeves. Racing shaped sleeves. Accordion inserts on elbow and back. Neoprene at collar for sweat absorbing. 2 outer pockets. Air vents at front and at back. Neck closing with volume regulation. Sleeve volume regulations. Waist regulation with snap button system. Adjustable waist with strap and velcro. Reflective zones on sleeves, front and back. Thermal removable quilt liner with mobile and document pocket. 1 inner pocket. Connecting zipper.

SPYKE™
ESTORIL GT DRY TECNO

4RACE



**TEXTILE
SPORT
JACKETS**



CE
This product is CE Certified.

TEXTILE SPORT JACKETS
ESTORIL GT
120632

4RACE
MAN

38 | 40 | 42 | 44 | 46 | 48 | 50 | 52 | 54 | 56 | 58 | 60 | 62

Your racing soul shown to the public



Another functional and good looking jacket. Hit the streets no matter the weather.



ZERO BLACK

Color variations



ZERO BLACK
10000



BLK/WHT/RED
10133



BLK/WHT/FLUOYELLOW
10107

Materials

2 in 1 jacket. Outer shell - polyester 600D and mesh lining. Removable thermal lining.

Technical Solutions

CE approved shoulder and elbow protectors. Protectors approved with PN-EN-1621-1:2012. Pocket for NEW CE level 2 SOFT BACK PROTECTOR. All stitching areas for the safety seams construction according to FprEN 17092:2018 standard. X-STRETCH panels on sides and inner sleeves. Racing shaped sleeves. Accordion inserts on elbow and back. Neoprene at collar for sweat absorbing. 2 outer pockets. Air vents at front and at back. Neck closing with volume regulation. Sleeve volume regulations. Waist regulation with snap button system. Adjustable waist with strap and velcro. Reflective zones on sleeves, front and back. Thermal removable quilt liner with mobile and document pocket. 1 inner pocket. Connecting zipper.



SPORT & SHORT GLOVES

4RACE

SPORT & SHORT GLOVES

**TECH PRO
130964**

Pro riders most wanted gloves. Long, top-shelf racing gloves for anyone who looks for the best protection level.

Long, premium quality racing gloves made of cowhide. They provide the highest protection level thanks to kevlar, many TPU inserts and reinforcements. It's possible to use your phone with them on as well.

**4RACE
MAN**

XXS | XS | S | M | L | XL | XXL | 3XL | 4XL



Color variations



BLACK
10101



BLACK/WHITE/FLUO RED/
FLUO YELLOW
10166A



WHITE/BLACK/FLUO RED
10232A



WHITE/BLACK/FLUO RED/
FLUO YELLOW
10233A

Materials

Calf leather, Clarino.

Technical Solutions

Long racing premium cow leather gloves. · Protective TPU knuckle and wrist protectors hidden finger protection. · Hard TPU protective wrist opening protector. · TPU palm slider. · Reinforced leather on palm for good protection. · Wrist restraint velcro opening. · Kevlar inside for high end protection. · Accordion for easy movement. · Touch phone compatible. · Velcro opening cuff. · Soft Polyester lining inside.

**SPYKE™
TECH RACE**

SPORT & SHORT GLOVES
**TECH RACE
130965**

**Advanced long leather gloves for racing
passionates**

Long racing gloves made of cowhide. Best protection level thanks to TPU knuckle and fingers protectors, as well as padding in the areas that are the most exposed for abrasion.



**4RACE
MAN**

XXS | XS | S | M | L | XL | XXL | 3XL | 4XL



SPORT & SHORT GLOVES
**TECH SPORT VENTED 2.0
130967**

**Soft, racing leather gloves with many solutions
to give you the best protection level.**

Gloves matching high safety standards thanks to many TPU protectors, paddings and reinforcements. Great fitting by usage of straps and velcro. Possibility of using your phone with the gloves on.



**4RACE
MAN**

XXS | XS | S | M | L | XL | XXL | 3XL | 4XL



Color variations



ZERO BLACK
10000



BLK/FLUO RED
10136A



BLK/WHT/FLUOYELLOW
10107



BLK/WHT/GOLD
10111

Materials

Calf leather, Clarino.

Technical Solutions

Long racing premium cow leather gloves. · Protective TPU knuckle protector. · TPU finger protections. · Nice wrist protector. · Padding at crucial areas. · Gripy on palm for excellent strength. · Wrist restraint velcro opening. · Accordion for easy movement. · Velcro opening cuff. · Touch phone compatible. · Soft Polyester lining inside.

Color variations



BLACK
10101



BLK/WHT/FLUOYELLOW
10107



BLK/WHT/FLUORED
10135

Materials

Calf leather, Clarino.

Technical Solutions

Short racing premium leather gloves. · Protective TPU knuckle protector. · Hard TPU finger protections. · TPU palm slider. · Nice opening TPR strap. · Padding at crucial areas. · Reinforced layers of leather at palm for extra protection. · Touch phone compatible. · Velcro opening cuff. · Soft polyester lining inside.

SPORT & SHORT GLOVES
TECH SPORT LADY
130968

Soft, racing leather gloves with many solutions to give you the best protection level.

Gloves matching high safety standards thanks to many TPU protectors, paddings and reinforcements. Great fitting by usage of straps and velcro. Possibility of using your phone with the gloves on.

4RACE
WOMAN

XXS | XS | S | M | L | XL | XXL | 3XL | 4XL



Color variations



BLK/WHT/FLUORED
10135



BLACK
10101

Materials

Calf leather, Clarino.

Technical Solutions

Short racing premium leather gloves. · Protective TPU knuckle protector. · Hard TPU finger protections. · TPU palm slider. · Nice opening TPR strap. · Padding at crucial areas. · Reinforced layers of leather at palm for extra protection. · Touch phone compatible. · Velcro opening cuff. · Soft polyester lining inside

SPORT & SHORT GLOVES
TECH SHORT 2.0
130971

Soft, racing leather gloves with many solutions to give you the best protection level.

Sport gloves with elastic lycra to provide the best comfort and breathability. Many reinforcements on fingers and palm.

4RACE
MAN

XXS | XS | S | M | L | XL | XXL | 3XL | 4XL



Color variations



BLACK
10101



BLK/WHITE/FLUORED
10135



BLK/WHITE/FLUORANGE
10114

Materials

Cow leather, goat leather, microfiber.

Technical Solutions

Micro fiber + tricot laminated palm. Back hand printing area cow nappa leather. Goat leather in fourchette. TPR logos.



DRY TECNO FABRIC TOURING /ADV JACKETS

TOUR CODE

DRY TECNO FABRIC TOURING / ADV JACKETS
EQUATOR DRY TECNO 120520

TOUR CODE MAN

38 | 40 | 42 | 44 | 46 | 48 | 50 | 52 | 54 | 56 | 58 | 60 | 62



Now nothing can stop you

If travelling is your way of life, this is a jacket for you. All the functions you need to conquer the world in brand new desing.



Color variations



GREY/ANT/FLUOYELLOW 10402



BLK/ANT/FLUOYELLOW 10186



GREY/BLUE/FLUO YELLOW 10408

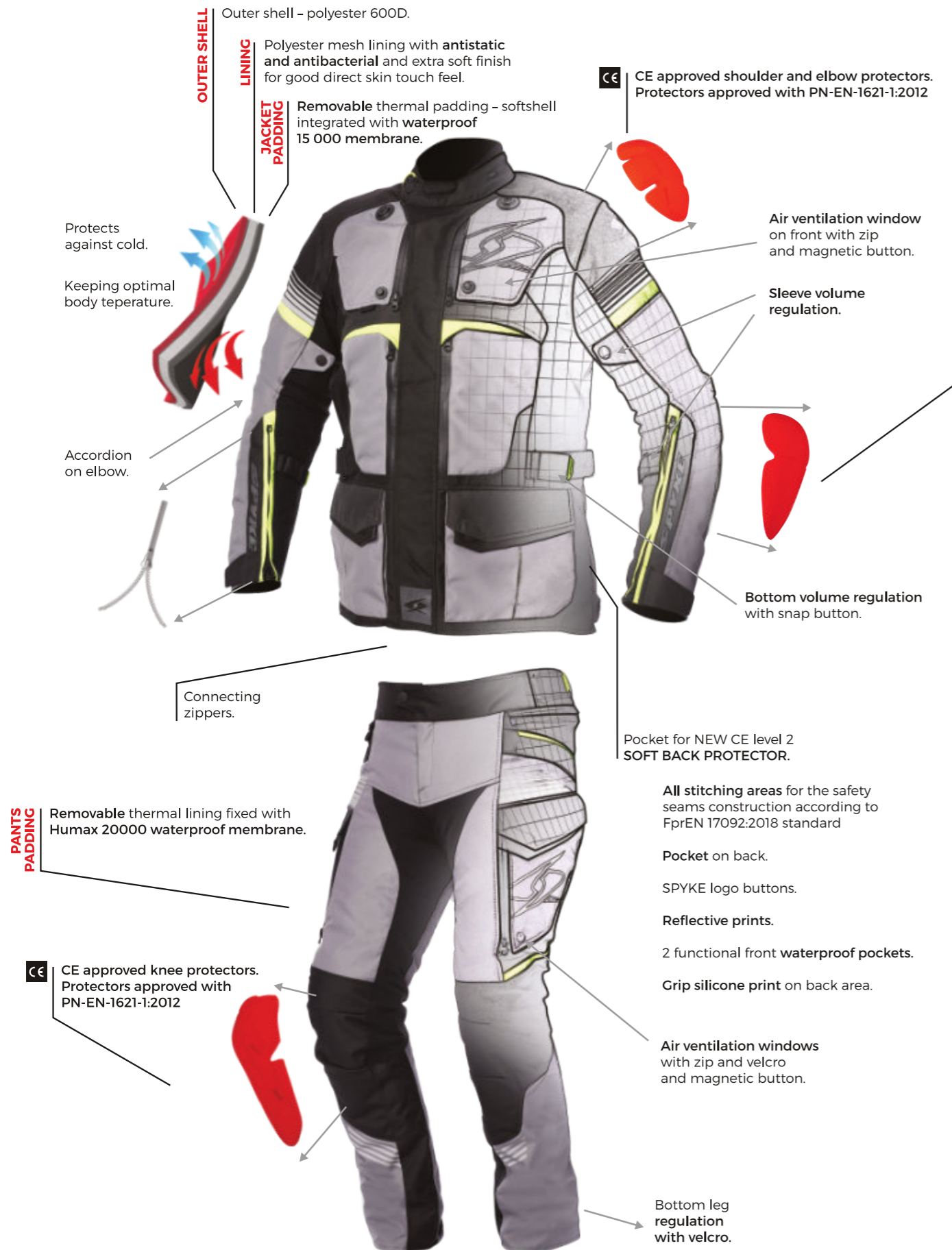


Materials

2 in 1 jacket. Outer shell - polyester 600D. Separately wearable, removable, breathable, 15000 waterproof, polyester fabric connected with softshell as thermal lining. All layers can be used separately. YKK Zippers & YKK Cosmo Hook & Loops.

Technical Solutions

CE approved shoulder and elbow protectors. Protectors approved with PN-EN-1621-1:2012. Pocket for NEW CE level 2 SOFT BACK PROTECTOR. All stitching areas for the safety seams construction according to FprEN 17092:2018 standard. Adjustable waist with strap and velcro. Reflective zones Reflective accordance with EN 20471 standard. Removable interior waterproof jacket. 100%Polyester mesh lining with antistatic and antibacterial and extra soft finish for good direct skin touch feel. Ventilation panels on back. Sleeve volume regulation. Neck closing with volume regulation. Air ventilation window on front with zip and magnetic button. Air ventilation on front. Functional pockets on front. Accordion on elbow. Bottom volume regulation with snap button. Two head zipper at the bottom of sleeve. Napoleon pocket inside the jacket. SPYKE logo buttons. Connecting zipper.



DRY TECNO FABRIC TOURING / ADV JACKETS
EQUATOR DRY TECNO LADY 120530

Now nothing can stop you

If travelling is your way of life, this is a jacket for you. All the functions you need to conquer the world in brand new desing.



TOUR CODE WOMAN

38 | 40 | 42 | 44 | 46 | 48 | 50 | 52 | 54 | 56 | 58 | 60 | 62

DRY TECNO FABRIC TOURING / ADV JACKETS
EVERGLADE DRY TECNO 2.0 120553

Adventure awaits the brave

Ride into unknown with well known jacket. SPYKE's TOP touring jacket in refreshed version. Ready for adventure?



TOUR CODE MAN

38 | 40 | 42 | 44 | 46 | 48 | 50 | 52 | 54 | 56 | 58 | 60 | 62

Color variations



BLK/ANT/FLUOYELLOW 10186



GREY/ANT/FLUOYELLOW 10402



GREY/BLUE/FLUO YELLOW 10408



Materials

2 in 1 jacket. Outer shell - polyester 600D. Separately wearable, removable, breathable, 15000 waterproof, polyester fabric connected with softshell as thermal lining. All layers can be used separately. YKK Zippers & YKK Cosmo Hook & Loops.

Technical Solutions

CE approved shoulder and elbow protectors. Protectors approved with PN-EN-1621-1:2012. Pocket for NEW CE level 2 SOFT BACK PROTECTOR. All stitching areas for the safety seams construction according to FprEN 17092:2018 standard. Adjustable waist with strap and velcro. Reflective zones Reflective accordance with EN 20471 standard. Removable interior waterproof jacket. 100%Polyester mesh lining with antistatic and antibacterial and extra soft finish for good direct skin touch feel. Ventilation panels on back. Pocket on back. Sleeve volume regulation. Neck closing with volume regulation. Air ventilation window on front with zip and magnetic button. Air ventilation on front. Functional pockets on front. Accordion on elbow. Bottom volume regulation with snap button. Two head zipper at the bottom of sleeve. Napoleon pocket inside the jacket. SPYKE logo buttons. Connecting zipper. Fit for Lady.

Color variations



GREY/BLACK 10401



BLACK 10101

Materials

3 in 1 jacket. Outer shell 100% polyester 600D. Removable Humax 20000 waterproof membrane with normal mesh. Removable thermal lining. YKK Zippers & YKK Cosmo Hook & Loops.

Technical Solutions

CE approved shoulder and elbow protectors. Protectors approved with PN-EN-1621-1:2012. Pocket for NEW CE level 2 SOFT BACK PROTECTOR. All stitching areas for the safety seams construction according to FprEN 17092:2018 standard. Neoprene at collar for sweat absorbing. Ventilation panel on back. Air ventilation window on front with zip and magnetic button. Air ventilation on front. Bottom volume regulation with snap button. Adjustable waist with strap and velcro. Neck closing with volume regulation. Sleeve volume regulation. TEX STRONG fabric on shoulder and elbow. Two head zipper at bottom of sleeve. Reflective zones Reflective accordance with EN 20471 standard. 100%Polyester mesh lining with antistatic and antibacterial and extra soft finish for good direct skin touch feel. Napoleon pocket inside the jacket. Functionalpocket on back. SPYKE logo buttons. Connecting zipper. Evolution system hook on shoulder and inner arms.

DRY TECNO FABRIC TOURING / ADV JACKETS
EVERGLADE DRY TECNO 2.0 LADY 120552

Adventure awaits the brave

Ride into unknown with well known jacket. SPYKE's TOP touring jacket in refreshed version. Ready for adventure?



TOUR CODE WOMAN

38 | 40 | 42 | 44 | 46 | 48 | 50 | 52 | 54 | 56 | 58 | 60 | 62

DRY TECNO FABRIC TOURING / ADV JACKETS
MERIDIAN DRY TECNO 120540

Start your journey today, world awaits

For shorter and longer trips around the city and around the planet. SPYKE quality for best price.



TOUR CODE MAN

38 | 40 | 42 | 44 | 46 | 48 | 50 | 52 | 54 | 56 | 58 | 60 | 62

Color variations



GREY/BLK 10401

BLACK 10101

Materials

3 in 1 jacket. Outer shell 100% polyester 600D. Removable Humax 20000 waterproof membrane with normal mesh. Removable thermal lining. YKK Zippers & YKK Cosmo Hook & Loops.

Technical Solutions

CE approved shoulder and elbow protectors. Protectors approved with PN-EN-1621-1:2012. Pocket for NEW CE level 2 SOFT BACK PROTECTOR. All stitching areas for the safety seams construction according to FprEN 17092:2018 standard. Neoprene at collar for sweat absorbing. Ventilation panel on back. Air ventilation window on front with zip and magnetic button. Air ventilation on front. Bottom volume regulation with snap button. Adjustable waist with strap and velcro. Neck closing with volume regulation. Sleeve volume regulation. TEX STRONG fabric on shoulder and elbow. Two head zipper at bottom of sleeve. Reflective zones. Reflective accordance with EN 20471 standard. 100% Polyester mesh lining with antistatic and antibacterial and extra soft finish for good direct skin touch feel. Napoleon pocket inside the jacket. Functional pocket on back. SPYKE logo buttons. Connecting zipper. Evolution system hook on shoulder and inner arms. Fit for Lady.

Color variations



ICE/BLK/RED 10117

BLK/ANT/FLUOYELLOW 10186

Materials

2 in 1 jacket. Outer shell - 100% polyester 600D. removable waterproof membrane fixed with Nylon soft fabric and thermal lining. YKK Zippers & YKK Cosmo Hook & Loops.

Technical Solutions

CE approved shoulder and elbow protectors. Protectors approved with PN-EN-1621-1:2012. Pocket for NEW CE level 2 SOFT BACK PROTECTOR. All stitching areas for the safety seams construction according to FprEN 17092:2018 standard. Adjustable waist with strap and velcro. Bottom volume regulation with snap button. AIR ventilation pockets at front and back. Functional pockets on front. Sleeve volume regulation. Two head zipper at the bottom of sleeve. Functional pocket on back. Reflective zones. Reflective accordance with EN 20471 standard. Removable interior membrane. 100% Polyester mesh lining with antistatic and antibacterial and extra soft finish for good direct skin touch feel. SPYKE logo buttons. Connecting zipper.



SPYKE™
MERIDIAN DRY TECNO



TOUR CODE

WATERRESISTANT & WINDBREAKING TOURING JACKETS



WATERRESISTANT & WINDBREAKING
VENTED TEXTILE TOURING JACKETS

TOURING AIR GT-2
120683

Windbraking touring jacket for those seeking for adventure

Removable CE-approved shoulder and elbow protectors and pocket for optional back protector provide best safety level. 7 pockets ensure that everything needed will be available to carry. Many adjustable points ensure best fit and removable REISSA membrane makes it possible to ride in any weather conditions.

SPYKE

TOUR CODE
MAN

38 | 40 | 42 | 44 | 46 | 48 | 50 | 52 | 54 | 56 | 58 | 60 | 62



Color variations



GREY
10034



BLACK
10101



MUD
10100

Materials

Outside fabric 100%NYLON SOFT. High-strength 100% polyester mesh panels. Fixed inner poly-mesh lining. Removable REISSA membrane.

Technical Solutions

Removable CE approved shoulder and elbow protectors. • Pocket for CE level 2 Certified HSS FOLD BACK PROTECTOR or NEW CE SOFT PROTECTOR size 2. • 6 external pockets, 1 inner pocket. • Adjustable button collar and wrist closure. • EVOLUTION SYSTEM hook on shoulders and inner arms. • Adjustable waist with velcro. • Sleeves adjustment to prevent billowing. • Reflective zones on front and back. • SHV (Spyke High Visibility) Integrated System on arms. • Stretch device for joining jacket/pants with universal zip fastening and velcro.



TOUR CODE

**VENTED
TEXTILE
JACKETS**



SPYKE™
AIRMASTER



This product is CE Certified.

SPYKE™

TOUR CODE MAN

38 | 40 | 42 | 44 | 46 | 48 | 50 | 52 | 54 | 56 | 58 | 60 | 62



VENTED TEXTILE JACKETS AIRMASTER 120650

Don't fight with winds, ride them

Modern look, great design and breathability. This is what makes an out-standing airflow jacket.



Color variations



BLACK
10101



BLK/RED/GRAY
10402



BLK/GRY/FLUOYELL
10405



GRAY/ORABNGE
10406



GRAY/BLUE
10407



Materials

2 in 1 jacket. 100%Polyester 600D. Removable, waterproof, breathable interior Humax 20000 waterproof membrane. 100% polyester mesh panels.

Technical Solutions

CE approved shoulder and elbow protectors. Protectors approved with PN-EN-1621-1:2012 Pocket for NEW CE level 2 SOFT BACK PROTECTOR. All stitching areas for the safety seams construction according to FprEN 17092:2018 standard. Adjustable waist with strap and velcro. Sleeve opening with regulation. Sleeve volume regulation. Neck closing with volume regulation. Zip fastener at sleeve with „flat-lock“ system (autolocking and anti-floating system). Mesh panels for better breathability. Reflective zones on sleeves front and back. Reflective accordance with EN 20471 standard. SPYKE logo buttons. Connecting zipper.

TOUR CODE WOMAN

38 | 40 | 42 | 44 | 46 | 48 | 50 | 52 | 54 | 56 | 58 | 60 | 62



VENTED TEXTILE JACKETS AIRMASTER LADY 120651

Don't fight with winds, ride them

Modern look, great design and breathability. This is what makes an out-standing airflow jacket.



Color variations



Materials

2 in 1 jacket, 100%Polyester 600D. Removable, waterproof, breathable interior Humax 20000 waterproof membrane. 100% polyester mesh panels.

Technical Solutions

CE approved shoulder and elbow protectors. Protectors approved with PN-EN-1621-1:2012 Pocket for NEW CE level 2 SOFT BACK PROTECTOR. All stitching areas for the safety seams construction according to FprEN 17092:2018 standard. Adjustable waist with strap and velcro. Sleeve opening with regulation. Sleeve volume regulation. Neck closing with volume regulation. Zip fastener at sleeve with „flat-lock“ system (autolocking and anti-floating system). Mesh panels for better breathability. Reflective zones on sleeves front and back. Reflective accordance with EN 20471 standard. SPYKE logo buttons. Connecting zipper. Fit for Lady.

SPYKE™
AIRMASTER



CE

This product is CE Certified.

SPYKE™

TOUR CODE MAN

38 | 40 | 42 | 44 | 46 | 48 | 50 | 52 | 54 | 56 | 58 | 60 | 62

VENTED TEXTILE JACKETS
LUFT MAN 2.0
120687

Catch every breath of wind

More air means more comfort. Take a ride in this breathing jacket.

[Thermal]⁺ REMOVABLE
lin-liner Lase
Layers AIR REINFORCED
THREAD



Color variations



MUD
10100



BLACK
10101



GREY
10034

Materials

2 in 1 jacket. Outer shell - 100% polyester 600D. Removable REISSA membrane fixed with thermal lining. 100% polyester mesh panels.

Technical Solutions

CE approved shoulder and elbow protectors. 2 external pockets. 1 inner pocket. Neck closing with volume regulation. Bottom regulation with velcro. Sleeve volume regulation. Reflective zones on front, back and sleeves.



**DRY
TECNO
FABRIC
TOURING
/ADV
PANTS**

TOUR CODE

DRY TECNO FABRIC TOURING / ADV PANTS
EQUATOR DRY TECNO PANTS 120720

Now nothing can stop you

Three layers, multiple pockets, CE protectors. You're ready for the longest journeys.



TOUR CODE MAN

38 | 40 | 42 | 44 | 46 | 48 | 50 | 52 | 54 | 56 | 58 | 60 | 62



Color variations



BLK/ANT/FLUOYELLOW
10186

GRY/ANT/FLUOYELLOW
10402

GREY/BLUE/FLUO YELLOW
10408

Materials

2 in 1 pants. Outer shell – polyester 600D. Removable Humax20000 waterproof membrane. Fixed with thermal lining. YKK Zippers & YKK Cosmo Hook & Loop.

Technical Solutions

CE approved knee and hip protector. Protectors approved with PN-EN-1621-1:2012. All stitching areas for the safety seams construction according to FprEN 17092 : 2018 standard. Folding fake frontal pockets for ventilation. Ventilated thigh and shin panels, adjustable with zip fasteners. Adjustable waist with strap and velcro. Bottom leg regulation with velcro. Reflective zones. Reflective accordance with EN 20471 standard. Removable interior membrane. 100% Polyester mesh lining with antistatic and antibacterial and extra soft finish for good direct skin touch feel. SPYKE logo buttons. 2 functional front waterproof pockets. Air ventilation windows with zip and velcro and magnetic button. Connecting zipper.

DRY TECNO FABRIC TOURING / ADV PANTS
EQUATOR DRY TECNO PANTS LADY 120730

Now nothing can stop you

Three layers, multiple pockets, CE protectors. You're ready for the longest journeys.



TOUR CODE WOMAN

38 | 40 | 42 | 44 | 46 | 48 | 50 | 52 | 54 | 56 | 58 | 60 | 62



Color variations



BLK/ANT/FLUOYELLOW
10186

GRY/ANT/FLUOYELLOW
10402

GREY/BLUE/FLUO YELLOW
10408

Materials

2 in 1 pants. Outer shell – polyester 600D. Removable Humax20000 waterproof membrane. Fixed with thermal lining. YKK Zippers & YKK Cosmo Hook & Loop.

Technical Solutions

CE approved knee and hip protector. Protectors approved with PN-EN-1621-1:2012. All stitching areas for the safety seams construction according to FprEN 17092 : 2018 standard. Folding fake frontal pockets for ventilation. Ventilated thigh and shin panels, adjustable with zip fasteners. Adjustable waist with strap and velcro. Bottom leg regulation with velcro. Reflective zones. Reflective accordance with EN 20471 standard. Removable interior membrane. 100% Polyester mesh lining with antistatic and antibacterial and extra soft finish for good direct skin touch feel. SPYKE logo buttons. 2 functional front waterproof pockets. Air ventilation windows with zip and velcro and magnetic button. Connecting zipper.

DRY TECNO FABRIC TOURING / ADV PANTS
EVERGLADE DRY TECNO 2.0 PANTS 120753

Adventure awaits the brave

Pair it with Everglage 2.0 jacket and don't let the weather surprise you. Now you can start your long planned trip.



Color variations



BLACK 10101



GRAY/BLACK 10401

Materials

3 in 1 pants. Outer shell- polyester 600D. Removable Humax20000 waterproof membrane. Removable thermal lining. YKK Zippers & YKK Cosmo Hook & Loops.

Technical Solutions

CE approved knee and hip protector. Protectors approved with PN-EN-1621-1:2012. All stitching areas for the safety seams construction according to FprEN 17092:2018 standard. Folding frontal pockets for ventilation. Ventilated thigh and shin panels, adjustable with zip fasteners. Adjustable waist with strap and velcro. Reflective zones Reflective accordance with EN 20471 standard. Removable interior membrane. 100%Polyester mesh lining with antistatic and antibacterial and extra soft finish for good direct skin touch feel. Double fabric reinforcement on seat area. Air ventilation on thigh. Accordion on knee area. TEX STRONG fabric on knee area. Bottom leg regulation with velcro. Multiple pockets for storage. SPYKE logo buttons. Connecting zipper.

DRY TECNO FABRIC TOURING / ADV PANTS
EVERGLADE DRY TECNO 2.0 PANTS LADY 120752

Adventure awaits the brave

Pair it with Everglage 2.0 jacket and don't let the weather surprise you. Now you can start your long planned trip.



Color variations



BLACK 10101



GRAY/BLACK 10401

Materials

3 in 1 pants. Outer shell- polyester 600D. Removable Humax20000 waterproof membrane. Removable thermal lining. YKK Zippers & YKK Cosmo Hook & Loops.

Technical Solutions

CE approved knee and hip protector. Protectors approved with PN-EN-1621-1:2012 All stitching areas for the safety seams construction according to FprEN 17092:2018 standard. Folding frontal pockets for ventilation. Ventilated thigh and shin panels, adjustable with zip fasteners. Adjustable waist with strap and velcro. Reflective zones Reflective accordance with EN 20471 standard. Removable interior membrane. 100%Polyester mesh lining with antistatic and antibacterial and extra soft finish for good direct skin touch feel. Double fabric reinforcement on seat area. Air ventilation on thigh. Accordion on knee area. TEX STRONG fabric on knee area. Bottom leg regulation with velcro. Multiple pockets for storage. SPYKE logo buttons. Connecting zipper. Fit for Lady.

TOUR CODE WOMAN

38 | 40 | 42 | 44 | 46 | 48 | 50 | 52 | 54 | 56 | 58 | 60 | 62



DRY TECNO FABRIC TOURING / ADV PANTS
MERIDIAN DRY TECNO PANTS 120742

Start your journey today, world awaits

There is always good moment to start the trip. Now you have perfect outfit for this purpose..



Color variations



BLK/ANT/YFLUOYELLOW
10186



ICE/BLK/RED
10117

Materials

2 in 1 pants. Outer shell - polyester 600D. removable, waterproof membrane fixed with thermal lining. YKK Zippers & YKK Cosmo Hook & Loops.

Technical Solutions

CE approved knee and hip protector. Protectors approved with PN-EN-1621-1:2012 All stitching areas for the safety seams construction according to FprEN 17092:2018 standard. Ventilated thigh panels, adjustable with zip fasteners. Adjustable waist with strap and velcro. Adjustable bottom leg with velcro. Accordion on knee. Pockets on front and back. Reflective zones Reflective accordance with EN 20471 standard. Removable interior membrane. 100%Polyester mesh lining with antistatic and antibacterial and extra soft finish for good direct skin touch feel. SPYKE logo buttons. Connecting zipper.

DRY TECNO FABRIC TOURING / ADV PANTS
BREVA DRY TECNO 120726

Waterproof universal pants

Universal pants for different purposes. Wear it with leather, textile or softshell



Color variations



BLACK
10101

Materials

2 in 1 pants. 100% Nylon soft polyamide fabric with Teflon® treatment fixed with waterproof membrane and normal mesh. Removable thermal lining.

Technical Solutions

CE approved knee protectors Protectors approved with PN-EN-1621-1:2012 All stitching areas for the safety seams construction according to FprEN 17092:2018 standard. Accordion inserts on knee. Air vents at thigh Velcro waist adjustment. Waist adjustable belts. Bottom leg regulation with velcro. Two functional pockets on front. One functional pocket on back. Reflective zones. SPYKE logo buttons. Connecting zipper.

TOUR CODE MAN

38 | 40 | 42 | 44 | 46 | 48 | 50 | 52 | 54 | 56 | 58 | 60 | 62



TOUR CODE

SUMMMER VENTED TEXTILE PANTS

DRY TECNO FABRIC TOURING / ADV PANTS
BORA 2
120725A

TOUR CODE
MAN

38 | 40 | 42 | 44 | 46 | 48 | 50 | 52 | 54 | 56 | 58 | 60 | 62



Best-fit touristic pants with many protectors and 4 pockets

Very comfortable thanks to usage of X-STRETCH inserts and adjustable bottom&waist closure. Reflective zones and removable CE approved knee protectors and side paddings provide best safety level. 4 pockets ensure possibility of carrying needed things.



Color variations



BLACK
10101

Materials

Outside fabric 100%NYLON SOFT.
High-strenght poly-mesh panels.
Groin X-STRETCH inserts. Fixed
inner poly-mesh lining.

Technical Solutions

Removable CE approved knee protectors, height adjustable. · Side removable paddings. · Flex zones on knees and back waist.
2 frontal pockets. · 2 back pockets. · Double regulation adjustable waist closure. · Reflective zones on the back Adjustable bottom
closure with zip and velcro.

**WATERPROOF
GLOVES**

TOUR CODE



WATERPROOF GLOVES
**LATITUDE DRY TECNO
131040**

Feel the heat of winter riding

Warm and comfortable, ready for colder days. Be sure to have control over your bike at any time.



Color variations



BLACK
10101

Materials

Polyamid fabric with goat leather, 150g termolate back palm and 75g termolate front palm with soft fabric, fixed 10000 Hipora waterproof membrane

Technical Solutions

Hidden plastic knuckle protection. Plastic side palm protection. Reflective zones. YKK velcro. Wrist restraint velcro opening. Velcro opening cuff. Touch phone compatible. Goat leather palm. Goat leather reinforcements on palm and hand side. Leather accordion on fingers.

**TOUR CODE
MAN**

XXS | XS | S | M | L | XL | XXL | 3XL | 4XL

WATERPROOF GLOVES
**IGNIS DRY TECNO
131041**

Gloves for colder days

Warm and comfortable, ready for colder days. Be sure to have control over your



Color variations



BLACK
10101

Materials

Polyamid fabric with goat leather, 150g termolate back palm with fur and 75g termolate front palm with soft fabric, fixed 10000 Hipora waterproof membrane

Technical Solutions

Hidden plastic knuckle protection. Plastic side palm protection. YKK velcro. Wrist restraint velcro opening. Velcro opening cuff. Touch phone compatible. Goat leather palm. Goat leather reinforcements on palm and hand side. Fabric accordion on fingers



SPYKE™
TOURING 2
DRY TECNO



This product is CE Certified.

SPYKE™

TOUR CODE MAN

XXS | XS | S | M | L | XL | XXL | 3XL | 4XL



WATERPROOF GLOVES TOURING 2 DRY TECNO 131032

Touring glove that gives you comfort and control in harsh weather conditions

Gloves matching high safety standards through protectors on knuckles, paddings on all the areas that are the most exposed for abrasion and leather reinforcements. Closure at a wrist with an adjustable velcro.



Color variations



BLACK
10101



SAND BEIGE
10501



Materials

Softshell, calf leather, Clarino, Drytecho membrane.

Technical Solutions

Semi-rigid moulded protections on knuckles. · Soft-touch lining. · Shock absorbing padding on phalanges, palm, back and lower palm. · Grip inserts on palm. · Leather reinforcements on little finger and palm. · Clarino palm. · Adjustable velcro wrist closure.

WATERPROOF GLOVES
**TOURING 2 DRY TECNO LADY
131036**

Touring glove that gives you comfort and control in harsh weather conditions

Gloves matching high safety standards through protectors on knuckles, paddings on all the areas that are the most exposed for abrasion and leather reinforcements. Closure at a wrist with an adjustable velcro.

**TOUR CODE
WOMAN**

XXS | XS | S | M | L | XL | XXL | 3XL | 4XL



Color variations



BLACK
10101

SAND BEIGE
10501



Materials

Softshell, calf leather, Clarino, Drytecno membrane

Technical Solutions

Fit for lady. · Semi-rigid moulded protections on knuckles. · Soft-touch lining. · Shock absorbing padding on phalanges, palm, back and lower palm. · Grip inserts on palm. · Leather reinforcements on little finger and palm. · Clarino palm. Adjustable velcro wrist closure

WATERPROOF GLOVES
**COMMUTER DRY TECNO
131042**

Keep your hands warm in any weather

Perfect gloves for city commuting. For bike and scooter riders.

**TOUR CODE
MAN**

XXS | XS | S | M | L | XL | XXL | 3XL | 4XL



Color variations



BLACK
10101

Materials

Polyamid fabric with goat and artificial leather, all around 3 mm fur padding, fixed 10000 Hipora waterproof membrane

Technical Solutions

Hidden plastic knuckle protection. YKK velcro. Wrist restraint velcro opening. Touch phone compatible. Artificial leather palm. Reinforcement at palm.

DAKAR™ SERIES TOURING GEAR

TOUR CODE





**OFFICIAL
PRODUCT**

MAN

EQUATOR DRY TECNO
AIRMASTER
TOURING 2 DRY TECNO



WOMAN

EQUATOR DRY TECNO
AIRMASTER
TOURING 2 DRY TECNO



CRUISER, CAFE RACER & URBAN LEATHER JACKETS

CONTEMPORARY



CRUISER, CAFE RACER & URBAN LEATHER JACKETS

**STRIPE GP 2 MAN
110360**

Stylish and elegant leather jacket for city & urban riding!

Provides the best protection level by usage of cowhide and removable CE-approved protectors. It is well-ventilated thanks to 2 air vents at the back. 8 pockets make it possible to carry all needed things.



**CONTEMPORARY
MAN**

38 | 40 | 42 | 44 | 46 | 48 | 50 | 52 | 54 | 56 | 58 | 60 | 62



CRUISER, CAFE RACER & URBAN LEATHER JACKETS

**STRIPE GP 2 LADY
110361**

A safe and stylish leather jacket for ladies who are looking for high protection level and good ventilation

Cowhide leather jacket with removable protectors and pocket for back protector. Good ventilation system thanks to 2 air vents on the back and perforated inserts. Many pockets to carry anything needed.



**CONTEMPORARY
WOMAN**

38 | 40 | 42 | 44 | 46 | 48 | 50 | 52 | 54 | 56 | 58 | 60 | 62



Color variations



BLACK
10101



BLACK/ICE
10104

Materials

Soft-Touch 0.9/1.0 mm cow leather. X-STRETCH fabric on shoulder, arms and sides. Inside fixed poly lining. Removable interior thermal padding in polyester and polyamide.

Technical Solutions

Removable CE approved knee and elbow protectors. · Pocket for NEW CE level 2 SOFT BACK PROTECTOR size 2. · 2 air vents on the back. · 4 external pockets. · 4 internal pockets. · Button collar closure. · Zip and button wrist closure. · Adjustable waist with strap and velcro.

Color variations



BLACK
10101



BLACK/ICE
10104

Materials

Soft-Touch 0.9/1.0 mm cow leather. X-STRETCH fabric on shoulder, arms and sides. Inside fixed poly lining. Removable interior thermal padding in polyester and polyamide.

Technical Solutions

Fit for lady. · Removable CE approved knee and elbow protectors. · Pocket for NEW CE level 2 SOFT BACK PROTECTOR size 1. · Inserts in perforated leather. · 2 air vents on the back. · 3 external pockets. · 4 internal pockets. · Button collar closure. · Zip and button wrist closure. · Adjustable waist with strap and velcro.

CRUISER, CAFE RACER & URBAN LEATHER JACKETS

RIDE LADY 110341

Comfortable lady leather jacket for any weather conditions

Best for any weather conditions thanks to soft mesh inner lining, perforated panels and removable thermal liner. Stylish, urban style connected with X-STRETCH fabric for the best fit and comfort.



CONTEMPORARY WOMAN

38 | 40 | 42 | 44 | 46 | 48 | 50 | 52 | 54 | 56 | 58 | 60 | 62



SPYKE™ MILANO 2.0



Color variations



BLACK 10101

Materials

Soft-Touch 0.9/1.0 mm buffa- lo leather. X-STRETCH fabric on shoulder, arms and sides. Inside fixed poly lining. Removable interior thermal padding in polyester and polyamide.

Technical Solutions

Premium leather outer shell construction. · Soft fix mesh interior lining with document pocket. · Thermal removable quilt liner with mobile and document pocket. · Antic silver no. 5 METAL front opening zipper. · Auto lock zippers on sleeves. · Hand warming pockets. · Belt loop for connecting jacket to pant. · Perforated panels for air ventilation. · Spyke logo buttons. · CE approved shoulder and elbow protectors, back normal perforated foam pad.

CRUISER, CAFE RACER & URBAN LEATHER JACKETS
MILANO 2.0 MAN
110344

CONTEMPORARY MAN

38 | 40 | 42 | 44 | 46 | 48 | 50 | 52 | 54 | 56 | 58 | 60 | 62



Fashion meets city bikers

2 in 1 jacket. Soft-Touch 0,9/1,0 mm buffalo leather. Fixed inside poly-mesh lining with stretch zones. Removable interior thermal padding in polyester and polyamide.



Color variations



RED
13101



BROWN
10035



BLUE
10040



BLACK
10101

Materials

2 in 1 jacket. Soft-Touch 0,9/1,0 mm buffalo leather. Fixed inside poly-mesh lining with stretch zones. Removable interior thermal padding in polyester and polyamide.

Technical Solutions

CE approved shoulder and elbow protectors. Protectors approved with PN-EN-1621-1:2012. Pocket for NEW CE level 2 SOFT BACK PROTECTOR. All stitching areas for the safety seams construction according to FprEN 17092 : 2018 standard. Antic silver no. 5 METAL front opening zipper. Zippers at front opening, sleeves and waist pockets. Neoprene at collar for sweat absorbing. 4 outer pockets. Hand warming pockets. Air vents at back Perforated areas front, back and sleeves for better breathability. Perforated leather panels for air ventilation. Thermal removable quilt liner with mobile and document pocket. 1 inner pocket. SPYKE logo buttons. Soft Polyester lining inside. Belt loop for connecting jacket to pant.

CRUISER, CAFE RACER & URBAN LEATHER JACKETS

MILANO 2.0 LADY 110345

CONTEMPORARY WOMAN

38 | 40 | 42 | 44 | 46 | 48 | 50 | 52 | 54 | 56 | 58 | 60 | 62



Fashion meets city bikers

2 in 1 jacket. Soft-Touch 0,9/1,0 mm buffalo leather. Fixed inside poly-mesh lining with stretch zones. Removable interior thermal padding in polyester and polyamide.



Color variations



RED
13101



BROWN
10035



BLUE
10040



BLACK
10101

Materials

2 in 1 jacket. Soft-Touch 0,9/1,0 mm buffalo leather. Fixed inside poly-mesh lining with stretch zones. Removable interior thermal padding in polyester and polyamide.

Technical Solutions

CE approved shoulder and elbow protectors. Protectors approved with PN-EN-1621-1:2012. Pocket for NEW CE level 2 SOFT BACK PROTECTOR. All stitching areas for the safety seams construction according to FprEN 17092 : 2018 standard. Antic silver no. 5 METAL front opening zipper. Zippers at front opening, sleeves and waist pockets. Neoprene at collar for sweat absorbing. 4 outer pockets. Hand warming pockets. Air vents at back Perforated areas front, back and sleeves for better breathability. Perforated leather panels for air ventilation. Thermal removable quilt liner with mobile and document pocket. 1 inner pocket. SPYKE logo buttons. Soft Polyester lining inside. Belt loop for connecting jacket to pant. Fit for Lady.

CRUISER, CAFE RACER & URBAN LEATHER JACKETS

**TENACY R2 MAN
110389**

Comfortable and safe jacket kept in street&ur- ban style for everyone!

Removable CE-approved protectors provide best safety level. Perforated leather inserts, elastic X-STRETCH inserts and adjustable waist ensure high-comfort. Removable thermal liner for every rider's comfort.



**CONTEMPORARY
MAN**

38 | 40 | 42 | 44 | 46 | 48 | 50 | 52 | 54 | 56 | 58 | 60 | 62



CRUISER, CAFE RACER & URBAN LEATHER JACKETS

**TENACY R2 LADY
110390**

Street & urban lady leather jacket with a good ventilation system

Good safety level thanks to removable, CE-approved protectors. Good ventilation by the usage of perforated leather zones. X-STRETCH fabric on many areas provides the high comfort level.



**CONTEMPORARY
WOMAN**

38 | 40 | 42 | 44 | 46 | 48 | 50 | 52 | 54 | 56 | 58 | 60 | 62



Color variations



BLACK
10101

Materials

Soft-Touch 0,9/1,0 mm cow leather. X-STRETCH fabric on shoulder, arms and sides. Inside fixed poly lining. Removable interior thermal padding in polyester and polyamide.

Technical Solutions

Removable CE approved shoulder and elbow protectors. · Pocket for NEW CE level 2 SOFT BACK PROTECTORS size 2. · Insert in perforated leather. · 4 external pocket. · 2 internal pocket. · Button collar closure. · Zip wrist closure. · Adjustable waist with strap and velcro.

Color variations



BLACK
10101

Materials

Soft-Touch 0,9/1,0 mm cow leather. X-STRETCH fabric on shoulder, arms and sides. Inside fixed poly lining. Removable interior thermal padding in polyester and polyamide.

Technical Solutions

Fit for lady. · Removable CE approved shoulder and elbow protectors. · Pocket for NEW CE level 2 SOFT BACK PROTECTOR size 1. Inserts in perforated leather. · 4 external pockets. · 2 internal pockets. · Button collar closure. · Zip and button wrist closure. · Adjustable waist with strap and velcro.

TEXTILE SPORT JACKETS

CONTEMPORARY



CONTEMPORARY RIDING JACKETS
**RIDER SUMMER GT
 120610**

Quality, comfort and safety in one jacket

CE-approved shoulder and elbow protectors provide best safety level. Possibility of including CE soft protector in the pocket at the back. Microfiber collar and wrist ensure nice-in-touch comfort. Adjustable waist make the jacket fit very well.



Color variations



BLACK
10101



RED
13101

Materials

Outside fabric 100% polyester 450D Fixed breathable inner poly-mesh lining.

Technical Solutions

Removable CE approved shoulder and elbow protectors. · Pocket for NEW CE level2SOFT BACK PROTECTOR size 2. · 4 external pockets. · 2 inner pockets. · Microfiber collar and wrist with botton closure. · Reflective zones on arms and back. · Adjustable waist with velcro.

**CONTEMPORARY
 MAN**

38 | 40 | 42 | 44 | 46 | 48 | 50 | 52 | 54 | 56 | 58 | 60 | 62



CONTEMPORARY RIDING JACKETS
**RIDER SUMMER GT LADY
 120611**

Fashionable, textile lady jacket for any woman who is looking for best protection

Textile jacket with many CE-approved, removable protectors. 4 pockets to carry needed things. Reflective zones to make the rider more visible on the road.



Color variations



BLACK
10101



RED
13101

Materials

Outside fabric 100% polyester 450D. Fixed breathable inner poly-mesh lining.

Technical Solutions

Fit for Lady. · Removable CE approved shoulder and elbow protectors. · Pocket for NEW CE level 2 SOFT BACK PROTECTOR size 2. · 4 external pockets. · 2 inner pockets. · Microfiber collar and wrist with botton closure. · Reflective zones on arms and back. · Adjustable waist with velcro.

**CONTEMPORARY
 WOMAN**

38 | 40 | 42 | 44 | 46 | 48 | 50 | 52 | 54 | 56 | 58 | 60 | 62



CONTEMPORARY

CONTEMPORARY JACKET

CONTEMPORARY JACKETS
STREET
170604

CONTEMPORARY MAN

2XS | XS | S | M | L | XL | XXL | 3XL | 4XL



Stylish jacket with many pockets to hold everything needed

Street and Urban jacket for man looking for a very contemporary & modern garment. Comfortable and practical at the same time, thanks to many inner and outer pockets. It has CE approved shoulder and elbow protectors and back foam pad.



Color variations



BLACK
10101

Materials

Combination of 100% goat leather with 98% cotton and 2% elasthan. Denim fabric. Fixed breathable inner lining.

Technical Solutions

Premium leather and denim outer shell construction. · Fix polyester quilt thermal lining inside with mobile and document pocket. · Spyke logo buttons. · Waist adjustable belts. · Chest and waist pockets. · Belt loop for connecting jacket to pant. · CE approved shoulder and elbow protectors, back normal perforated foam pad.

CONTEMPORARY

**CONTEM
PORARY
FASHION
RIDING
GLOVES**



CONTEMPORARY FASHION RIDING GLOVES
**BIARRITZ DRY TECNO
131018**

City, waterproof, good looking

Elegant and waterproof. Look good and don't give up functionality.

**CONTEMPORARY
MAN**

XXS | XS | S | M | L | XL | XXL | 3XL | 4XL



Color variations



BLACK
10101



BROWN
10035

Materials

100% buffalo leather. Fixed, waterproof, breathable interior membrane.

Technical Solutions

Padding at crucial areas. Hidden knuckle and finger protections. Reinforced leather on palm for good protection. Shock absorbing padding on phalanges, palm, back and lower palm. Reinforcement panels on palm and little finger. Velcro opening cuff. Soft Polyester lining inside. Touch phone compatible.

CONTEMPORARY FASHION RIDING GLOVES
**BIARRITZ
131016**

Short leather gloves for urban riders, stylish and safe

Product matching high safety standards thanks to hidden hard knuckles and fingers protectors and reinforcements on palm. Possibility of using the phone when the gloves are on.

**CONTEMPORARY
MAN**

XXS | XS | S | M | L | XL | XXL | 3XL | 4XL



Color variations



BLACK
10101



BROWN
10035

Materials

Goat leather.

Technical Solutions

Premium leather short gloves. Hard hidden knuckle and finger protections. Reinforced layers of leather at palm for extra protection. Touch phone compatible. Velcro opening cuff. Soft polyester lining inside.



SPYKE™
BARRITZ



This product is CE Certified.

SPYKE™

CONTEMPORARY FASHION RIDING GLOVES
BIARRITZ VENTED 2.0
131019

CONTEMPORARY
MAN

XXS | XS | S | M | L | XL | XXL | 3XL | 4XL



Perfect to match your leather jacket

Fashionable, perfect looking, vented and revisited design. If they caught your eye, you'll love it.



Color variations



BLACK
10101



BROWN
10035

Materials

100%buffalo leather.

Technical Solutions

Padding at crucial areas. Hidden knuckle and finger protections. Reinforced leather on palm for good protection. Shock absorbing padding on phalanges, palm, back and lower palm. Reinforcement panels on palm and little finger. Perforated leather panels for air ventilation. Velcro opening cuff. Soft Polyester lining inside. Touch phone compatible.

CONTEMPORARY



APPAREL

APPAREL
LEG BAG
142001

Keep your stuff safe while while breaking the limits

Leg bag is a perfect solution when you need take most important stuff with you and keep it within reach!



Color variations



BLACK
10101

Materials

100% Polyester.

Technical Solutions

Adjusted waist belt + thigh belt. 2 pockets with easy access. Waterproof zipper. Reflective imprints. Key chain inside.

APPAREL
AQUA
142002

Classic design with full waterproofness



Color variations



BLACK
10101



BLACK/RED
10134

Materials

Thermoplastic PU.

Technical Solutions

Thermoplastic PU. Full waterproofness. One big and one small pocket. Straps for regulations.

CONTEMPORARY
UNISEX

ONE SIZE

APPAREL
AERO
142003

CONTEMPORARY
UNISEX
ONE SIZE

Aerodynamic shape



Color variations



BLACK
10101

Materials

Hard EVA shell.

Technical Solutions

Strong shoulder straps, breast strap and belt strap. Hard EVA shell. Thick sponge at back for comfort. Inside laptop protective pocket.

APPAREL
URBEX
142004

CONTEMPORARY
UNISEX
ONE SIZE

Classic design with best safety



Color variations



BLACK
10101

Materials

100% Polyester.

Technical Solutions

Strong shoulder straps, breast strap and belt strap. Hidden helmet holder. Reflective material to increase visibility. Thick sponge at the back. Small pockets for different stuff.



ACCESSORIES

SPYKE™
ESTORIL RACE

ACCESSORIES



CE SOFT BACK PROTECTOR (M)
141131/10403/OS
CE SOFT BACK PROTECTOR (L)
141132/10403/OS



CE ELBOW PROTECTOR
141153/10403/OS Man
141157/10403/OS Lady



CE SHOULDER PROTECTOR
141156/10403/OS Man
141155/10403/OS Lady



CE HIP PROTECTOR
141125/10403/OS



TRACK SLIDER
141124/10101/OS
BLACK



SUSPENDERS
141110/10101
BLACK



ELBOW SLIDER
141126/10102/OS
BLACK/WHITE



ELBOW SLIDER
141126/13101/OS
RED



ELBOW SLIDER
141126/10202/OS
WHITE/GOLD



ELBOW SLIDER
141126/10201/OS
WHITE/BLACK



ELBOW SLIDER
141126/10166/OS
FLUOYELLOW/BLACK

**TECH
FEATURES**

ICONS

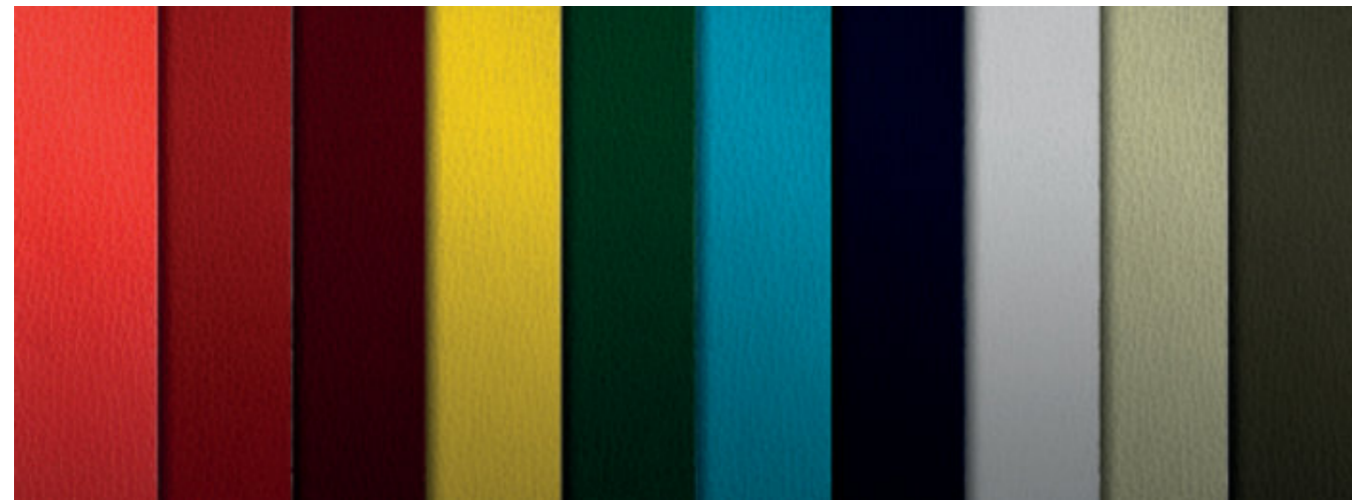
**SIZE
CHART**



TECH FEATURES

PELLE TECNICA PER USO MOTOCICLISTICO

Uso di pellami lavorati in Italia, con un'importante varietà di gamma, dove la scelta della materia prima nasce dalle performance richieste al capo.



1 - Pelle bovina smerigliata

Morbida, alta resistenza a trazione e strappo, spessore 1,2mm/1,3mm, idrorepellente.

2 - Pelle rinata a pigmento

È la più resistente ed è il pellame più usato nell'abbigliamento racing grazie alla sua versatilità. La superiore resistenza alla luce e al grao è ottenuta tramite l'applicazione di un lm pigmentato di rinizione; la supercie inoltre può essere stampata, anche in rilievo, oppure serigrafata.

3 - Pelle canguro pieno fiore

Rinata, morbida, idrorepellente, dall'aspetto lucente, che consente così di avere dei capi per un uso sportivo agonistico con il miglior rapporto possibile fra performances meccaniche e leggerezza.

4 - Pelle traforata bovina o di canguro

Morbida, con areazione tecnica che permette di localizzare le prese d'aria solo dove è indispensabile, lontano dalle cuciture, garantendo quindi oltre ad un'estetica migliore, anche una maggiore sicurezza in caso di caduta.

5 - Crosta bovina

Resistente per le parti più impegnative, più esposte a contrasto con oggetti esterni, generalmente utilizzata per inserti scamosciati, dalla "mano" vellutata e calda, molto confortevole al tatto.

6 - Pelle bovina e ovina trattata anilina

È quella che ha l'aspetto più naturale, in quanto è priva di qualunque rinizione coprente. Conserva le caratteristiche singolari del manto dell'animale per questo vi è la possibilità di intravedere differenti sfumature di colore. Il pellame lavorato all'anilina viene tinto, ma non è rinito con alcuna pellicola a polimeri o pigmenti. Si applica un sottile strato di lacca trasparente, che ha la funzione di proteggere dalle macchie e conferisce un tono di lucidità.

7 - Pelle vintage

Tipologia di articoli concepiti per avere un look unico e personale grazie ai particolari trattamenti di concia a base di resine ed ingrassi di origine naturale che enfatizzano con l'utilizzo il caratteristico effetto "vissuto". Gli standard qualitativi garantiscono inoltre elevate solidità dei colori in funzione delle destinazioni d'uso per cui il capo è stato progettato.

HIGH TECH LEATHER FOR RIDING PURPOSES

Use of leathers treated in Italy, with a wide diversity of range, where the selection of raw materials arises from the performance requested from the garment.

1 - Snued cow leather

Soft, high tension and tearing resistance, 1,2mm/1,3mm thick, water repellent.

2 - Pigment nished leather

It is the most resistant and it is the more used leather in racing clothing due to its versatility. The superior resistance to light and scratches is achieved through the application of a nishing pigmented lm; furthermore, the surface may be printed, also embossed, or silk screen printed.

3 - Full grain kangaroo leather

Rened, soft, water repellent, with a shining appearance, which allows in this way to have racing sports clothing with the best possible balance between mechanical performances and lightness.

4 - Kangaroo or cow perforated leather

Soft, with high tech ventilation allowing to locate the air vents only where indispensable, away from the seams, thus ensuring, further than better looks, also better safety in the event of a fall.

5 - Cow split grain

Resistant for the most stressed parts, the more exposed to the contrast with exterior objects, generally used for suede inserts, having a velvety and warm nish, very comfortable to touch.

6 - Aniline treated cow or sheep leather

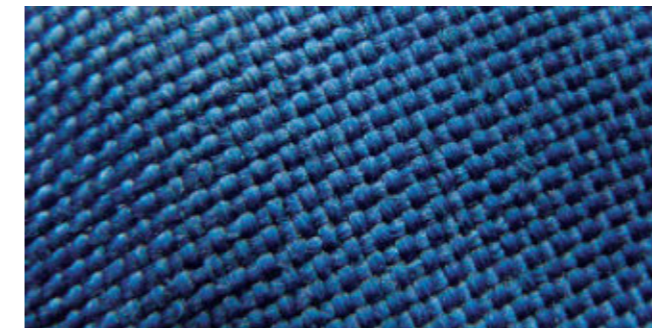
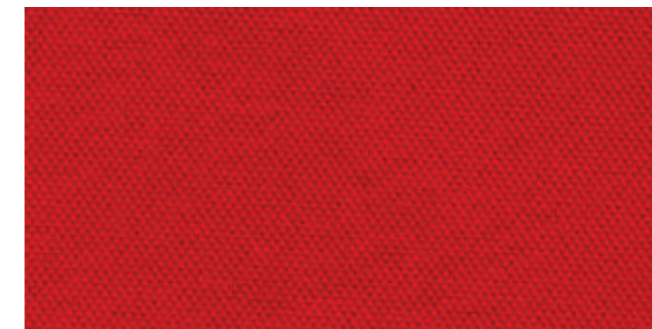
It's the one with the most natural appearance, because it has no cover nishing. It keeps the unique features of the coat of the animal, for this reason there is the possibility to glimpse different shades of color. The leather treated with aniline is dyed, but it is not nished with any polymeric lm or pigment a thin layer of transparent layer is applied, with the function to protect from stain and to give a touch of shine.

7 - Vintage leather

Type of goods designed to have a unique and personal look thanks to peculiar natural sourced resin and grease based tanning treatments which highlight with the use the specific "worn" effect. The quality standards guarantee as well high solidity of colors in function of the use destination for which the garment was designed.

TESSUTI TECNICI PER USO MOTOCICLISTICO

I capi Spyke utilizzano tessuti ad alta tenacità con speciali lavorazioni che combinano trame bi elastiche e orditi in lati ritorti. La combinazione e la selezione di speciali bre di Poliestere 600D, Cordura, Nylon, Rayon, Lycra, con grande resistenza alla trazione, al taglio, al calore e alla lacerazione e dalla bassissima conducibilità elettrica, dalle eccellenti performance meccaniche che vanno sommate a leggerezza e facilità di manutenzione e pulizia, rendono i capi in tessuto adatti all'uso in condizioni climatiche avverse, anche grazie al trattamento di idrorepellenza, garantendo un'adeguata protezione in caso di scivolata. In caso di pioggia, è sufficiente l'asciugatura dei capi all'aria per permettere di riattivare tutte le caratteristiche di oleo e idrorepellenza dei tessuti.

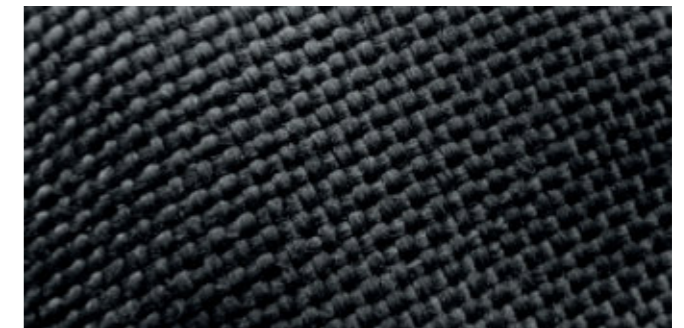
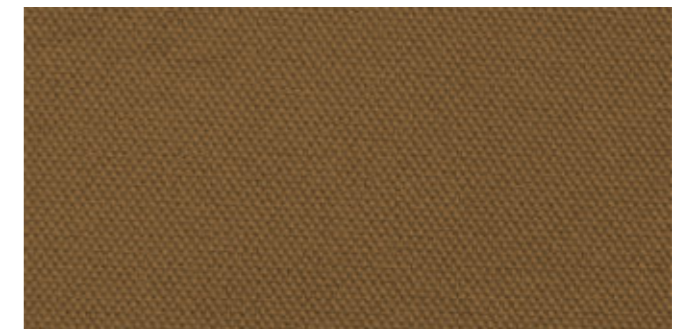


ZIP SPECIALI

I capi tecnici Spyke utilizzano innovative lampo a spirale di Nylon, altamente resistenti agli sbalzi termici e perfettamente adattabili alle curve del corpo. Tenacità, resistenza all'utilizzo e all'usura, adattabilità, uidità e precisione di chiusura ne caratterizzano le prestazioni. Le tute racing montano speciali zip a spirale, in grado di rispondere alle normative in merito alla protezione contro il calore e la fiamma, con un L.O.I. (limit oxygen index) tra 28-30. Nei capi più sportivi e racing si utilizzano le nuove zip con cursore antiottaggio autobloccante.

HIGH TECH FABRICS FOR RIDING PURPOSES

Spyke clothes use high tenacity fabrics with special treatments combining bi-elastic weaves with twisted yarns. The combination and the selection of special 600D Polyester, Cordura, Nylon, Rayon, Spandex, having high resistance to traction, cut, heat and tearing with the minimum electric conductivity, having excellent mechanical performances which must be added to lightness and easy maintenance and cleaning, make the fabric clothes suitable to be used under adverse weather conditions, also thanks to the water proofing treatment, guaranteeing an appropriate protection in case of slide. In case of rain, the simple drying of the clothes at the air is enough to reactivate all the oil and water repellence features of the clothes.



SPECIAL ZIPS

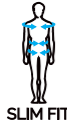
Spyke high tech clothes employ innovative Nylon spiral zip closure, having a high resistance to thermal shocks and perfectly adapting to the shapes of the body. Tenacity, resistance to use and wear, reliability, uidity and accuracy of closure characterise their performance. The racing suits are equipped with a spiral zip, able to meet the rules on the protection against heat and flame with a L.O.I. (limit oxygen index) ranging from 28 to 30. The sportier and racing clothes use the new zips with auto-locking anti-floating slider.

ICONS



AIR STRUCTURE

Spyke products with this sign have lining made of 3D mesh fabric. Thanks to this solution, more air circulates around rider's body, which makes garment more breathable.



SLIM FIT

This icon means that garment has Italian fitting and will make you look even more fashionable and will emphasize your figure.



CE

CE marking on product means that it has been submitted to a EU examination assessment in accordance with the requirements in the Regulation (EU) 2016/425 and has been granted a 2nd CAT. PPE (Personal Protective Equipments) against medium risks.



SSD - SPYKE SYNTHETIC DOWN

Synthetic down insulation offers a light weight, similar loft alternative to natural down.



DRYTECNO

Drytecno is a technology used by Spyke to protect the rider from rain and wind. The polyurethan resin membrane (PU), having a unique structure especially created to be used on the bike, which absorbs and drives out sweat but remains waterproof, ensures maximum protection from external elements. The unique construction of the garments with Drytecno technology creates a wide dry air volume between body and waterproof barrier, strongly reducing the risk of condensation from excessive sweat and contributes to keep constant the skin temperature (eliminating the heat dispersion through direct conduction body-lining-water).



AIR

The AIR products guarantee an appropriate ventilation thanks to extended net inserts or breathable perforated leather of differential weaves, further than the several perforated inserts in the zones where transferring outside of the body heat is needed.



X STRETCH

Special construction technology implying the use panels in innovative Elastomere combined in weaving with polyamidic yarns with high tenacity (x-stretch fabric) to guarantee optimal comfort and t thanks to the bidimensional elasticity. In the racing suit the x-stretch fabric is coupled with a leather panel, which, thanks to special gusset seams stretches lengthwise and in width, allowing to the rider agile and comfortable movements.



LOOSE LAYERS

The new "unlined" construction multilayer jackets are designed for achieving the best comfort and the best mobility for chest and arms, thanks to the reduction of friction between the components of the garment (shell-insert insulation-membrane).



RACING

Employment of cow leather for sporting purposes of kangaroo leather with a resistance to abrasion of more than 2000 Martyn Dayl cycles, more than 70kg/Newton tear resistance, no use of chemical products harmful for man, ex test (warm and cold), CE 1621-1 race use certification. To make a leather suit for track use 6 meters of cow leather (weight 5,5 kg), or 8 meters of kangaroo leather (weight 4,2kg) are needed.



REINFORCED THREAD

The seams reinforced with heavy duty yarns add durability to most abrasion and tension stressed parts of the garment.



FIT FOR LADY

Women's Spyke garments are created for the woman who does not want to quit her femininity, not even on two wheels. Thanks to the cut and the lines following feminine shapes, the adjustment velcro straps, the belts to enhance the waistline, but also more comfortable volumes in the breast area, Spyke women's garments dress riders in a comfortable and performing way, without giving up modern looks and maximum safety.



THERMAL

Spyke Thermal clothing offers warmth and comfort without adding weight. Lightness and freedom of movement are the key features of the products having the Thermal insulation technology, which, thanks to special paddings, grant a high resistance and a huge breathability, without absorbing water or humidity. The low heat transmission coefficient allows retaining temperature heat with even better features than wool.



REMOVABLE IN LINEAR

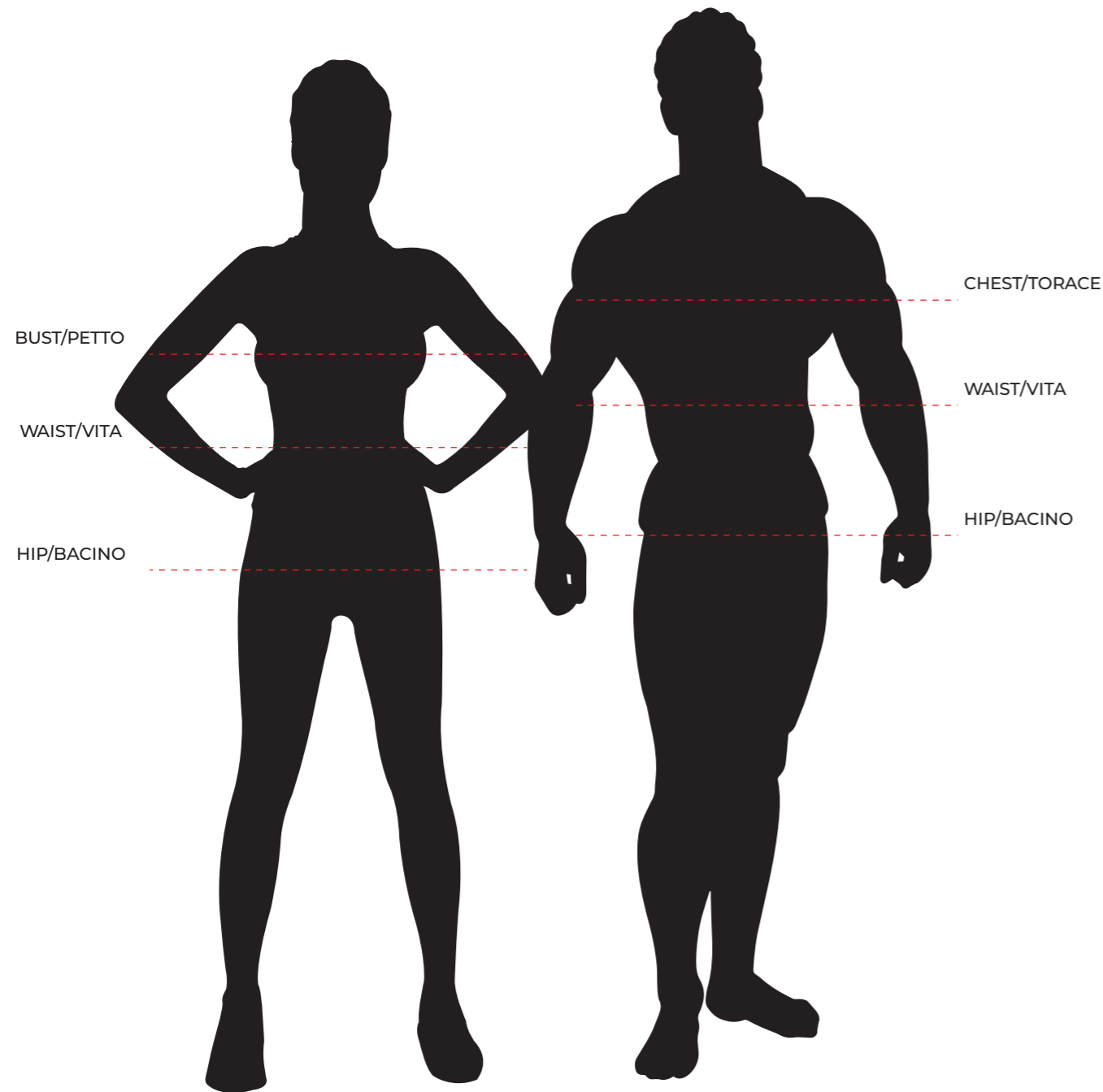
The inner layers can be removed and washed separately for a correct hygiene of the garment.



TAPED SEAMS

The seams of the Drytecno equipped garments are thermal-taped to prevent even the tiniest penetration of water.

SIZE CHART



MAN

SIZES/TAGLIE	EU	44	46	48	50	52	54	56	58	60
	ITA	46	48	50	52	54	56	58	60	62
	UK	36	38	40	42	44	46	48	50	52
	USA	36	38	40	42	44	46	48	50	52
	INTERNATIONAL	XS	S	M	L	XL	XXL	3XL	4XL	5XL

FIT/VESTIBILITÀ (cm)	CHEST/TORACE	90-94	94-98	98-102	102-106	106-110	110-114	114-118	118-122	122-126
	WAIST/VITA	80-84	84-88	88-92	92-96	96-100	100-104	104-108	108-112	112-116
	HIP/BACINO	90-94	94-98	98-102	102-106	106-110	110-114	114-118	118-122	122-126
	HEIGHT/ALTEZZA	164-170	167-173	170-176	173-179	176-182	179-185	180-185	181-186	181-186

WOMAN

SIZES/TAGLIE	EU	36	38	40	42	44	46	48	50	-
	ITA	38	40	42	44	46	48	50	52	-
	UK	6	8	10	12	14	16	18	20	-
	USA	4	6	8	10	12	14	16	18	-
	INTERNATIONAL	XS	S	M	M	L	XL	XXL	3XL	-

FIT/VESTIBILITÀ (cm)	BUST/PETTO	78-82	82-86	86-90	90-94	94-98	98-102	102-106	106-110	-
	WAIST/VITA	62-66	66-70	70-74	74-78	78-82	82-86	86-90	90-94	-
	HIP/BACINO	82-86	86-90	90-94	94-98	98-102	102-106	106-110	110-114	-
	HEIGHT/ALTEZZA	152-158	155-161	158-164	161-167	164-170	167-173	169-175	170-176	-

UNISEX

•	ITA	40/44	-	-	48/50	-	-	52/54	-	-
	INTERNATIONAL	XS/S	-	-	M/L	-	-	XL/2XL	-	-

GLOVES

•	INTERNATIONAL	XXS	XS	S	M	L	XL	XXL	-	-
---	---------------	-----	----	---	---	---	----	-----	---	---

:	HAND/MANO	18,2	19,4	20,6	21,8	23	24,2	25,4	-	-
---	-----------	------	------	------	------	----	------	------	---	---

* SIZES/TAGLIE

INDEX

AERO	142003
AIRMASTER	120650
AIRMASTER LADY	120651
AQUA	142002
ARAGON EVO	110310
ARAGON GT DT	120630
ARAGON RACE	110102
ASSEN RACE 2.0	110162
ASSEN SPORT 2.0	110261
BIARRITZ	131016
BIARRITZ DRY TECNO	131018
BIARRITZ VENTED 2.0	131019
BORA 2	120725A
BREVA DRY TECNO	120726
COMMUTER DRY TECNO	131042
DAYTONA DRY TECNO	120640
EQUATOR DT	120520
EQUATOR DT LADY	120530
EQUATOR DT PANTS	120720
EQUATOR DT PANTS LADY	120730
ESTORIL EVO	110320
ESTORIL GT	120632
ESTORIL GT DT	120631
ESTORIL RACE	110156
ESTORIL SPORT	110252
ESTORIL SPORT LADY	110253
EVERGLADE DT 2.0	120553
EVERGLADE DT 2.0 LADY	120552
EVERGLADE DT 2.0 PANTS	120753
EVERGLADE DT 2.0 PANTS LADY	120752
IGNIS DT	131041
IMOLA EVO 2.0	110363
JEREZ EVO	110359
LATITUDE DRY TECNO	131040
LEG BAG	142001
LF PANTS	110416
LF PANTS LADY	110417
LF SLIDER PANTS	110415
LOSAIL RACE	110161
LUFT MAN 2.0	120687
MERIDIAN DT	120540
MERIDIAN DT PANTS	120742
MILANO 2.0 LADY	110345
MILANO 2.0 MAN	110344
RIDE LADY	110341
RIDER SUMMER GT	120610
RIDER SUMMER GT LADY	120611
STREET	170604
STRIPE GP 2 LADY	110361
STRIPE GP 2 MAN	110360
TECH PRO	130964
TECH RACE	130965
TECH SHORT 2.0	130971
TECH SPORT LADY 2.0	130970
TECH SPORT VENTED 2.0	130969
TENACY R2 LADY	110390
TENACY R2 MAN	110389
TOURING 2 DRY TECNO	131032
TOURING 2 DRY TECNO LADY	131036
TOURING AIR GT-2	120683
URBEX	142004

All products and their related technical data, as well as illustrations, advice and information available through this catalogue are provided on an "as it is, as available" basis without warranties of any kind, either expressed or implied. Such information is updated as of the print date and has a mere indicative value and is not binding for Spyke Technology. Spyke Technology will not be liable for any mistakes in printing and/or translation. This catalogue may be accessed by users internationally and may contain references to products that are not available and/or whose features may vary in accordance with local laws. Not all colors and/or versions are available in all countries. Spyke Technology reserves the right to make changes and improvements to any product without any obligation to give prior notice or to carry out such changes to products already sold. Product delivery time varies depending on product availability, production schedule and when the order is placed. Further product specifications are indicated on the packaging or attached on the product itself. Technical apparel usage does not eliminate risk of injury during an accident. Please be careful while driving. Reproduction rights of the photographs represented in this catalogue belong to Spyke Technology. Any reproduction of these photographs without the explicit permission of the latter is strictly prohibited. Copyright 2018 Spyke Technology.

* Product specifications are subject to change without notice.



SPYKE INTERNATIONAL

Piazza della Vittoria 3
36065 Mussolente (VI)
Italia - Italy

Mail Info@spyke.it
Web Cspyke.it



facebook.com/spyke.social

