

Life is routine. **SPYKE.IT UP!**



FEEL THE SPEED

2019

4RACE

4R...



TOUR
CODE



CONTEM
PORARY





4 Race Tour Code Contemporary

**Non siamo più solo in pista.
Siamo nei tre mondi di Spyke.**

4 Race, Tour Code, Contemporary. We are no longer only on track, we are in the three Spyke worlds.

Abbiamo pensato ai motociclisti più esigenti. A quelli che vogliono la perfezione, non importa dove e come stanno viaggiando.

Per loro si sono mossi i migliori, in Spyke: un team di tecnici, modellisti e prototipisti di grande esperienza, che hanno disegnato, progettato e testato nelle condizioni più estreme tutti i prodotti che vi stiamo per raccontare. Non a caso, questi prodotti sono apprezzati in Italia e nel mondo. La loro filosofia costruttiva la dice lunga sulle loro performance. Parliamo ovviamente della tecnologia Dynamic 360.0: nata dopo aver osservato e studiato ogni movimento del pilota in azione.

È arrivata così la migliore risposta tecnica alle specifiche esigenze del motociclista.

Ogni giacca, ogni pantalone, ogni guanto ha una forma anatomicamente compatibile con le forme del suo corpo, in azione; si muove con lui, asseconda il suo dinamismo, aiuta il suo corpo a mantenere la posizione più corretta durante tutta la performance.

Non parliamo solo di pista, parliamo di "ogni luogo, ogni strada, ogni tempo".

È questa l'incredibile novità Spyke: aver dato tanto, aver dato tutto anche fuori dalla pista, dove il marchio Spyke è già un punto di riferimento, è già (grande) storia.

Spyke ha superato Spyke: ha portato il massimo della tecnica e della tecnologia nei mondi del turismo stradale e off-road, dove servono grandissima preparazione nel tessuto, nelle membrane ed in termini di funzionalità; e anche in città, dove lo stile e la vestibilità fanno la differenza. Fanno la vera differenza.

We thought of the most demanding riders. Those seeking perfection, no matter where or how they are riding.

Only the best staff Spyke could offer was employed for them: a highly experienced team of technician, modelists and prototypists, who styled, designed and tested under the most demanding conditions each product we are now going to show you.

It's not a case if these products are renowned in Italy and worldwide.

Their construction philosophy tells a great deal about their performance.

We are of course talking of the Dynamic 360.0 technology: it comes from the observation and study of any movement of the rider in action.

In this way, the best technical response to the specific needs of the rider was achieved.

Each jacket, each pair of trousers, each glove has an area which is anatomically compatible with the shapes of his body, in action; it moves with him, follows his dynamism, helps his body to keep the most correct position throughout his performance. We are not talking of track only, we are talking of "any place, any road, any weather". This is the incredible innovation from Spyke: giving so much, giving everything also off-track, where the Spyke brand is already a benchmark, is already (great) history. Spyke surpassed Spyke: it brought the maximum of High Tech and Technology in the worlds of road touring and off-road, where outstanding skills in fabrics, membranes and in terms of practicality are needed; and also in town, where style and fit make the difference.

The real difference.



07 RACING 1PC LEATHER SUITS

08	110101	MUGELLO KANGAROO MIX RACE	10	110160	ASSEN RACE
09	110161	LOSAIL RACE	11	110155	BLASTER GT-R

12 SPORT 2PC LEATHER SUITS

13	110260	ASSEN SPORT	15	110250	BLASTER GT-S
14	110262	IMOLA SPORT	16	110251	BLASTER GT-S LADY

17 SPORT LEATHER JACKET

18	110359	JEREZ EVO	19	110362	IMOLA EVO
----	--------	-----------	----	--------	-----------

20 LF SLIDER PANTS

21	110415	LF SLIDER PANTS	23	110417	LF PANTS LADY
22	110416	LF PANTS MAN			

24 DRY TECNO FABRIC SPORT JACKETS

25	120640	DAYTONA DRY TECNO SPORT	26	1206C2	CORSA GT-R DRY TECNO
----	--------	-------------------------	----	--------	----------------------

27 TEXTILE SPORT JACKETS

28	1206C4	CORSA GT-R
----	--------	------------

29 SPORT & SHORT GLOVES

30	130964	TECH PRO	33	130963	SPORT TOURING LEATHER
31	130965	TECH RACE	34	131033	SPORT SHORT AIR
32	130966	TECH SPORT	35	131030	TECH SHORT

37 DRY TECNO FABRIC TOURING / ADV JACKETS

38	120550	PATHFINDER EXTREME DRY TECNO	39	120551	EVERGLADE DRY TECNO MAN
----	--------	------------------------------	----	--------	-------------------------

40 WATERRESISTANT & WINDBREAKING VENTED TEXTILE TOURING JACKETS

41	120683	TOURING AIR GT-2
----	--------	------------------

42 VENTED TEXTILE JACKETS

43	1206B3	MYSTRAAL AIR	44	120686	LUFT MAN
----	--------	--------------	----	--------	----------

45 SOFT SHELL & INSULATOR JACKET

46	120620	SOFTSHELL COMBO
----	--------	-----------------



47 DRY TECNO FABRIC TOURING / ADV PANTS

48	120750	RADOM 2 DRY TECNO MAN	50	120740	EVONRAY 2 DRY TECNO MAN
49	120751	EVERGLADE DRY TECNO MAN	51	120741	EVONRAY 2 DRY TECNO LADY

52 SUMMER VENTED TEXTILE PANTS

53	120725A	BORA 2 PANT
----	---------	-------------

54 WATERPROOF GLOVES

55	131031	RALLY 2 DRY TECNO	57	131036	TOURING 2 DRY TECNO LADY
56	131032	TOURING 2 DRY TECNO MAN	58	131034	VILLE 2 DRY TECNO MAN

60 CRUISER, CAFE RACER & URBAN LEATHER JACKET

61	110360	STRIPE GP2 MAN	65	110342	MILANO MAN
62	110361	STRIPE GP2 LADY	66	110343	MILANO LADY
63	110340	RIDE MAN	67	110389	TENACY R2 MAN
64	110341	RIDE LADY	68	110390	TENACY R2 LADY

69 CONTEMPORARY RIDING JACKETS

70	120610	RIDER SUMMER GT MAN	71	120611	RIDER SUMMER GT LADY
----	--------	---------------------	----	--------	----------------------

72 CONTEMPORARY JACKETS

73	170604	STREET	74	170605	BOMBER ONE
----	--------	--------	----	--------	------------

75 DENIM PANTS / CHINO

76	120760	OUTSIDER	78	120762	TRAVELLER
77	120761	RACER			

79 DENIM PANTS / CHINO

80	131016	BIARRITZ	82	131015	URBAN SOFTSHELL
81	131017	BIARRITZ VENTED			

83 ACCESSORIES

84	141131	NEW CE SOFT PROTECTOR MIS.1	86	141154	KIT KNEE PROTECTOR (WITH VELCRO)
84	141132	NEW CE SOFT PROTECTOR MIS.2	87	141123	SLIDERS FOR RAIN RACE
85	141155	KIT SHOULDER MIS.1	87	141121	TRACK SLIDER RACE SUIT 2 PIECE
85	141156	KIT SHOULDER MIS.2	88	141124	TRACK SLIDER RACE SUIT
86	141153	KIT ELBOW PROTECTOR	88	141110	SUSPENDERS

89 TECH FEATURES / ICONS / SIZE CHART

96 NOTEBOOK

98 INDEX

4RACE



**RACING
TPC
LEATHER
SUITS**



110101

One piece racing suit for the most demanding riders

Man

38 | 40 | 42 | 44 | 46 | 48 | 50 | 52 | 54 | 56 | 58 | 60 | 62

Provides the protection level by many removable CE certified protectors, kangaroo leather inserts and double-layered leather panels. Contains a back hump that also improves aerodynamics. Many perforated areas and elastic inserts provide the best comfort.



TOP OF THE RANGE



Color variations



110101
WHT/BLK/RED



110102
BLK/WHT

Materials

Water-repellent cow leather 1.2/1.3 mm with water repellent kangaroo inserts 0.9/1mm. Stretch aramid fiber inserts. Removable inside poly-mesh lining with stretch zones.

Technical Solutions

Outer ergonomic in composite material and TPU (Thermoplastic Polyurethane Elastomer) protectors on knee. · Removable CE approved potectors on shoulder, elbow and knee. · Pocket for NEW CE level 2 SOFT BACK PROTECTOR size 2. · Antishock side paddings. · Kangaroo leather inserts on: shoulders, sleeves, sides, leg. Perforated cow leather on front area, sleeves, legs and calves. · Leather flex zones on shoulder blades, back of the waist and behind knees. · Flex aramid fiber inserts on arms, crotch and back of the knees. · High-strength stretch fabric inserts on sides and stomach. · Racing back hump for improved aerodynamic performance. · Double layer leather on sides and back pants. · Shock absorbing paddings on arms, sides and lower back. · Zip fastener on sleeves and bottom legs with "flat lock" system (autolocking & anti-floating slider). · Neoprene ankle and wrist cuffs. · 1 inner pocket. · Sliders included. · Protectors approved with PN-EN-1621-1:2012



4R...

110161

One piece racing suit for riders who need comfort and safety both in one suit

Cowhide suit equipped with many protectors to provide best safety level available. Back hump for best aerodynamic. Many accordion and elastic inserts as well as perforated panels to ensure high comfort.

Man

38 | 40 | 42 | 44 | 46 | 48 | 50 | 52 | 54 | 56 | 58 | 60 | 62



TOP OF THE RANGE



Color variations



1
0
1
0
2

BLK/WHT



1
0
1
3
3

BLK/WHT/RED



1
2
3
4
5

BLK/WHT/FLUOYELL

Materials

Water-repellent 1.2/1.3 mm cow leather. Stretch aramid fiber insert. Fixed inside poly-mesh lining with stretch zones.

Technical Solutions

Premium cow hide outer shell construction. · Soft fix mesh interior lining with document pocket. · Protective Spyke logo shoulder and knee protectors. · Aerodynamic speed hump. · Perforated panels for air ventilation. · Stretch fabric for better fit nylon front opening zipper. · Auto lock zippers at sleeves nylon zippers on legs easy to wear. · Accordion at elbow, knee and back part for easy movement. · CE approved Safe Tech shoulder, elbow and knee protectors, back normal perforated foam pad. Padding at crucial areas. · Spyke logo buttons. · Removable knee sliders. · Protectors approved with PN-EN-1621-1:2012.


110160
One piece racing comfortable suit providing best safety level
Man

38 | 40 | 42 | 44 | 46 | 48 | 50 | 52 | 54 | 56 | 58 | 60 | 62

Made of water-repellent cowhide, equipped with CE-approved Safe Tech protectors. Accordion inserts on elbow, knee and back for easy movement. Contains back hump that improves the aerodynamic.


Color variations

110102
BLK/WHT

110301
WHT/BLK/RED

110302
WHT/BLK/BLUE
Materials

Water-repellent 1.2/1.3 mm cow leather. Stretch aramid fiber insert. Fixed inside poly-mesh lining with stretch zones.

Technical Solutions

Premium cow hide outer shell construction. · Soft fix mesh interior lining with document pocket. · Protective Spyke logo shoulder protectors. · Aerodynamic speed hump. · Stretch fabric for better fit. · Auto lock zippers at sleeves nylon zippers on legs for easy opening. · Accordion at elbow, knee and back part for easy movement. · Spyke logo buttons. · CE approved Safe Tech shoulder, elbow and knee protectors, back normal perforated foam pad. · Removable knee sliders. · Protectors approved with PN-EN-1621-1:2013



Well-ventilated one piece racing suit

Man

38 | 40 | 42 | 44 | 46 | 48 | 50 | 52 | 54 | 56 | 58 | 60 | 62

CE-approved shoulder, elbow, knee and shin protectors care about the rider's safety as well as TPU protectors. Perforated panels provide best ventilation system available and many elastic inserts care about easy movement. Aerodynamic performance is increased by usage of back hump.



Color variations



110155

BLK/WHI



110201

WHI/BLK



110231

WHI/BLK/RED



110164

BLK/WHI/FLUOYELL



115931

WHI/BLK/GRN/RED

Materials

Water-repellent 1,2/1,3 mm buffalo leather. Stretch aramid fiber insert. Fixed inside poly-mesh lining with stretch zones.

Technical Solutions

Outer TPU (Thermoplastic Polyurethane Elastomer) and composite fibers ergonomic shoulder and knee protectors. · Removable CE approved shoulder, elbow, knee and shin protectors. · Pocket for CE level 2 certified BACK HSS FOLD PROTECTOR or NEW CE SOFT PROTECTOR size 2. · Perforated buffalo leather on the front area, sleeves, legs and calves. · Leather flex zones on shoulders blades, back of the waist and legs. · Flex aramid fiber inserts on arms, crotch and back of the knees. · Racing back hump for improved aerodynamic performance. · Antishock pads on arms and sides. · 1 internal pocket. · Sliders included. · Protectors approved with PN-EN-1621-1:2013

**SPORT
2PC
LEATHER
SUITS**



4R...

110260

Comfortable two pieces racing suit

Man

38 | 40 | 42 | 44 | 46 | 48 | 50 | 52 | 54 | 56 | 58 | 60 | 62

CE-approved shoulder, elbow, knee and back protectors care about the rider's safety. Easy movement provided by many elastic and accordion inserts. Aerodynamic performance is increased by back hump.



Color variations



110201

WHT/BLK

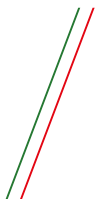


110301

WHT/BLK/RED

Materials

Water repellent 1.2/1.3 mm cow leather. Stretch aramid fiber inserts. Removable inside poly-mesh lining with stretch zones.



Technical Solutions

Premium cow hide outer shell construction. · Soft fix mesh interior lining with document pocket. · Protective Spyke logo shoulder protectors. · Aerodynamic speed hump. · Stretch fabric for better fit. · Auto lock zippers at sleeves nylon zippers on legs easy to wear connecting zipper. · Accordion at elbow, knee and back for relax movement. · Spyke logo buttons. · CE approved Safe Tech shoulder, elbow and knee protectors, at back normal perforated foam pad. · Removable knee sliders. · Connecting zipper.



110262

High quality leather two piece racing suit

Man

38 | 40 | 42 | 44 | 46 | 48 | 50 | 52 | 54 | 56 | 58 | 60 | 62

The rider's safety is provided by CE-approved shoulder, elbow and knee protectors. Many elastic inserts ensure easy movement. Aerodynamic performance is increased by back hump.



Color variations



110102
BLK/WHT



110133
BLK/WHT/RED



110103
BLK/WHT/FLUOYELL

Materials

Water-repellent 1.2/1.3 mm cow leather. Stretch aramid fiber insert. Fixed inside poly-mesh lining with stretch zones.

Technical Solutions

Premium cow hide outer shell construction. · Soft fix mesh interior lining with document pocket. · Aerodynamic speed hump. · Stretch fabric for better fit. · Auto lock zippers at sleeves nylon zippers on legs for easy opening. · Accordion at elbow, knee and back part for easy movement. · Spyke logo buttons. · CE approved Safe Tech shoulder, elbow and knee protectors, back normal perforated foam pad. · Removable knee sliders. · Connecting zipper.

4RACE



BLASTER GT-S

4R...

110250

Comfortable two pieces racing suit

Man 38 | 40 | 42 | 44 | 46 | 48 | 50 | 52 | 54 | 56 | 58 | 60 | 62

CE-approved shoulder, elbow, knee and back protectors care about the rider's safety. Easy movement provided by many elastic and accordion inserts. Aerodynamic performance is increased by back hump.



Color variations



110201
WHT/BLK



110231
WHT/BLK/RED

Materials

Water-repellent 1,2/1,3 mm buffalo leather. Stretch aramid fiber insert. Fixed inside poly-mesh lining with stretch zones.

Technical Solutions

Outer ergonomic TPU (Thermoplastic Polyurethane Elastomer) shoulder protectors. · Removable CE approved shoulder, elbow, knee and shin protectors. · Back hump for improved aerodynamic performance. · Pocket for CE level 2 certified HSS FOLD BACK PROTECTOR or NEW CE SOFT PROTECTOR size 2. · Shock absorbing padding on sides and arms. · Leather flex zones on shoulder blades, back of the waist and behind knees. · Flex aramid fiber insert on arms, crotch and back of the knee. · Double layer leather on sides and back pants. · High-strength connecting zip. · 1 internal pocket. · Sliders included. · Connecting zipper.

SPYKE 2019

SPORT 2PC LEATHER SUITS


110251
Ladies racers more than welcome for this 2-piece racing suit
Woman

38 | 40 | 42 | 44 | 46 | 48 | 50 | 52 | 54 | 56 | 58 | 60 | 62

Two-piece lady suit matching the highest safety standards through many CE certified, removable protectors used. Good fit provided thanks to the stretch leather inserts. Sliders included.

FIT FOR LADY

R racing

AIR

REINFORCED THREAD

STRETCH


Color variations


1 0 1 0 2

BLK/WHT



1 0 2 3 1

WHT/BLK/RED

Materials

Water-repellent 1,2/1,3 mm buffalo leather. Stretch aramid fiber insert. Fixed inside poly-mesh lining with stretch zones.

Technical Solutions

Fit for lady. · Outer ergonomic TPU (Thermoplastic Polyurethane Elastomer) shoulder protectors. · Removable CE approved shoulder, elbow, knee and shin protectors. · Pocket for CE level 2 certified HSS FOLD BACK PROTECTOR or NEW CE SOFT PROTECTOR size 1. · Shock absorbing padding on sides, shoulder blades, back of the waist and arms. · Stretch leather ex zones on shoulder blades, sides, back of waist and behind knees. · Aramid fiber inserts on arms, crotch and back of the knees. · Double layer leather on sides and back pants. · High-strength connecting zip. · 1 internal pocket. · Sliders included.





**SPORT
LEATHER
JACKET**



110359

Very comfortable cow hide jacket with thermal liner

Man

38 | 40 | 42 | 44 | 46 | 48 | 50 | 52 | 54 | 56 | 58 | 60 | 62

X-STRETCH fabric on shoulders, arms and sides and accordion inserts ensure comfort. Two air vents at front and one at back allow your body to breathe. Removable thermal liner included.



Color variations



Materials

Soft-Touch 0,9/1,0 mm cow leather. X-STRETCH fabric on shoulder, arms and sides. Inside fixed poly lining. Removable interior thermal padding in polyester and polyamide

Technical Solutions

Premium cow hide outer shell construction. · Soft fix mesh interior lining. · Thermal removable quilt liner with mobile and document pocket. · Stretch fabric for nice fit. · Nylon front opening zipper. · Auto lock zippers on sleeves. · Hand warming pockets. · Two air vents at front and one at back for air ventilation. · Standard connection zip. · Padding at crucial areas. · Accordion at shoulder back for easy movement. · Spyke logo buttons. · CE approved shoulder and elbow protectors, back normal perforated foam pad. · Protectors approved with PN-EN-1621-1:2013



4R...

110362

Quality leather racing jacket with removable thermal liner

Man

38 | 40 | 42 | 44 | 46 | 48 | 50 | 52 | 54 | 56 | 58 | 60 | 62

Made of soft-touch cowhide with X-STRETCH fabric on shoulders, arms and sides and accordion inserts for easy movement. Possibility of riding on colder days thanks to removable thermal liner. CE-approved protectors care about the rider's safety.



Color variations



10101

BLACK



10101

BLK/WHT/ANT



12102

BLK/WHT/BLUE



10231

WHT/BLK/RED



10101

WHT/BLK/FLUOYELL

Materials

Soft-Touch 0,9/1,0 mm cow leather. X-STRETCH fabric on shoulder, arms and sides. Inside fixed poly lining. Removable interior thermal padding in polyester and polyamide

Technical Solutions

Premium cow hide outer shell construction. · Soft fix mesh interior lining with document pocket. · Thermal removable quilt liner with mobile and document pocket. · Stretch fabric for nice fit. · Zippers at front opening, sleeves and waist pockets. · Standard connection zipper. · Padding at crucial areas. · Accordion at elbow and shoulder back for easy movement. · Spyke Logo buttons. · CE approved shoulder and elbow protectors, back normal perforated foam pad. · Protectors approved with PN-EN-1621-1:2013

SPYKE 2019

SPORT LEATHER JACKET

**LEATHER
PANTS**

4RACE



LF SLIDER PANTS

4R...

110415

Comfortable racing pants with seamless construction parts

Seamless friction areas construction and X-STRETCH fabric inserts provide best comfort of use. Ventilation system is ensured by perforated front and back zones. Removable CE-approved knee and shin protectors care about the rider's safety.

Man

38 | 40 | 42 | 44 | 46 | 48 | 50 | 52 | 54 | 56 | 58 | 60 | 62



Color variations



110101
BLACK



110102
BLK/WH

Materials

1,0/1,1 mm cow leather. Inside fixed poly-mesh lining.

Technical Solutions

Dynamic seamless construction on friction areas on pant and inside lining. Shock absorbing side paddings. Leather flex zones on waist and knees and high-strength X-STRETCH fabric on inguinal area, thighs, calves and groins. Perforated areas front and back for better breathability. Removable CE approved knee and shin protectors. Waist zip connection to jacket. Knee sliders included. 2 external pockets. Protectors approved with PN-EN-1621-1:2013



110416

Super comfortable pants for safe racing

Man

38 | 40 | 42 | 44 | 46 | 48 | 50 | 52 | 54 | 56 | 58 | 60 | 62

Seamless friction areas construction and X-STRETCH fabric inserts provide best comfort of use. Removable CE-approved knee and shin protectors care about the rider's safety. Dual zip bottom closure makes it possible to wear the boots both under and above the pants.



Color variations



Materials

0,9/1,0 mm cow leather. Inside fixed poly-mesh lining.

Technical Solutions

Dynamic seamless construction on friction areas on pant and inside lining. Shock absorbing side paddings. Flex zones on waist and knees, highstrength X-STRETCH fabric on crotch area, thighs, calves and groins. High-strength fabric inserts for a better comfort. Removable CE approved knee and shin protectors. Waist zip connection system to jacket. Dual zip bottom closure to wear the pant both inside and outside the boot. Protectors approved with PN-EN-1621-1:2013



4R...

110417

Racing leather lady pants for women who want more

Best comfort level by usage of X-STRETCH fabric on many areas and seamless friction areas construction. Removable CE-approved protectors of shin and knee. Possibility of wearing the pants inside and outside the boots.

Woman

38 | 40 | 42 | 44 | 46 | 48 | 50 | 52 | 54 | 56 | 58 | 60 | 62



Color variations



110417
BLACK

Materials

0,9/1,0 mm cow leather. Inside fixed poly-mesh lining

Technical Solutions

Fit for lady · Dynamic seamless construction on friction areas on pant and inside lining · Shock absorbing side paddings · Flex zones on waist and knees, highstrength X-STRETCH fabric on crotch area, thighs, calves and groins · Highstrength fabric inserts for a better comfort · Removable CE approved knee and shin protectors · Waist zip connection system to jacket · Dual zip bottom closure to wear the pant both inside and outside the boot · Protectors approved with PN-EN-1621-1:2013

**DRY
TECNO
FABRIC
SPORT
JACKETS**



4R...

120640

Racing fabric jacket best for riding in any weather conditions

600D polyester Maxtex and Teflon used provide best safety level, as well as CE-approved protectors of shoulder and elbow. Back is safe thanks to perforated foam pad. Removable thermal liner and waterproof and breathable membrane made the jacket best for riding in any weather conditions.

Man

38 | 40 | 42 | 44 | 46 | 48 | 50 | 52 | 54 | 56 | 58 | 60 | 62



Color variations



10110
BLK/WHT/ANTRA



10133
WHT/BLK/RED



10101
BLK/WHT/FLUOYELL

Materials

External fabric and reinforcements 100% high-strength 600D polyester and Teflon® treatment. Inner fixed poly lining. Removable inner thermal padding in polyester. Fixed inner membrane waterproof and breathable.

Technical Solutions

Polyester Maxtex 600D outer shell construction. · Fix polyester micro mesh interior lining with document pocket. · Thermal removable quilt liner with mobile and document pocket. · Coil front opening zipper, waist and cuff. · Accordion at elbow and shoulder back for easy movement. · Waist adjustable belts. · Neopren at collar for sweat absorbing standard connection zipper. · CE approved shoulder and elbow protectors, back normal perforated foam pad. · Protectors approved with PN-EN-1621-1:2013

SPYKE 2019
DRY TECNO FABRIC SPORT JACKETS



1206C2

Waterproof racing jacket for anyone that needs comfort and safety in one garment

Man

38 | 40 | 42 | 44 | 46 | 48 | 50 | 52 | 54 | 56 | 58 | 60 | 62

Rain will not be an issue when riding in this jacket thanks to 100% waterproof performance. Removable thermal liner and membrane make this garment best for any weather conditions and many adjustment points provide best fit. CE-approved shoulder and elbow protectors and TPU shoulder caps care about the rider's safety.



Color variations



1 0 0 1 0 0 2
BLK/WHT



1 0 0 1 0 0 2
SND/GRY/BLK

Materials

External fabric and reinforcements 100% high-strength 600D polyester and Teflon® treatment. Inner fixed poly lining. Removable inner thermal padding in polyester. Fixed inner membrane waterproof and breathable.

Technical Solutions

100% waterproof. · Removable CE approved shoulder and elbow protectors. · Pocket for CE level 2 Certified HSS FOLD BACK PROTECTOR or NEW CE SOFT PROTECTOR size 2. · 2 external pockets. · 2 inner pockets. · Adjustable velcro collar closure and button wrist adjustment. · Adjustable waist with velcro. · Reflective zones.



**TEXTILE
SPORT
JACKETS**



1206C4

Affordable racing jacket for anyone that needs comfort and safety in one garment

Man

38 | 40 | 42 | 44 | 46 | 48 | 50 | 52 | 54 | 56 | 58 | 60 | 62

Rain will not be an issue when riding in this jacket thanks to 100% waterproof performance. Removable thermal liner and membrane make this garment best for any weather conditions and many adjustment points provide best fit. CE-approved shoulder and elbow protectors and TPU shoulder caps care about the rider's safety.



Color variations



10102

BLK/WHT



13101

RED/BLK/WHT



13101

WHT/BLK/RED

Materials

Outside fabric and reinforcements 100% high-strength 600D polyester and Teflon® treatment. Fixed inner poly lining. Removable inner thermal padding in polyester.

Technical Solutions

Removable CE approved shoulder and elbow protectors. · Pocket for CE level 2 certified HSS FOLD BACK PROTECTOR or NEW CE SOFT PROTECTOR size 2. · 2 external pockets. · 2 internal pockets. · Adjustable velcro collar closure and button wrist adjustment. · Adjustable waist with velcro. · Reflective zones.

**SPORT &
SHORT
GLOVES**



130964

Pro riders most wanted gloves. Long, top-shelf racing gloves for anyone who looks for the best protection level.

Man

XXS | XS | S | M | L | XL | XXL | 3XL | 4XL

Long, premium quality racing gloves made of cowhide. They provide the highest protection level thanks to kevlar, many TPU inserts and reinforcements. It's possible to use your phone with them on as well.



Color variations



101001
BLACK



10134
BLK/RED



10164
BLK/FLUOYELL



101012
BLK/WHT

Materials

Calf leather, Clarino.

Technical Solutions

Long racing premium cow leather gloves. · Protective TPU knuckle and wrist protectors hidden finger protection. · Hard TPU protective wrist opening protector. · TPU palm slider. · Reinforced leather on palm for good protection. · Wrist restraint velcro opening. · Kevlar inside for high end protection. · Accordion for easy movement. · Touch phone compatible. · Velcro opening cuff. · Soft Polyester lining inside.



4RACE



TECH RACE

4R...

130965

Advanced long leather gloves for racing passionates

Long racing gloves made of cowhide. Best protection level thanks to TPU knuckle and fingers protectors, as well as padding in the areas that are the most exposed for abrasion.

Man

XXS | XS | S | M | L | XL | XXL | 3XL | 4XL



Color variations



10134

BLK/RED



10101

BLACK

Materials

Calf leather, Clarino.

Technical Solutions

- Long racing premium cow leather gloves.
- Protective TPU knuckle protector.
- TPU finger protections.
- Nice wrist protector.
- Padding at crucial areas.
- Gripy on palm for excellent strength.
- Wrist restraint velcro opening.
- Accordion for easy movement.
- Velcro opening cuff.
- Touch phone compatible.
- Soft Polyester lining inside.

SPYKE 2019

SPORT & SHORT GLOVES



130966

Soft, racing leather gloves with many solutions to give you the best protection level.

Man

XXS | XS | S | M | L | XL | XXL | 3XL | 4XL

Gloves matching high safety standards thanks to many TPU protectors, paddings and reinforcements. Great fitting by usage of straps and velcro. Possibility of using your phone with the gloves on.



Color variations



1
0
0
1
BLACK



1
0
0
3
BLK/WHT/RED



1
0
0
2
BLK/WHT/BLUE

Materials

Calf leather, Clarino

Technical Solutions

Short racing premium leather gloves. · Protective TPU knuckle protector. · Hard TPU finger protections. · TPU palm slider. · Nice opening TPR strap. · Padding at crucial areas. · Reinforced layers of leather at palm for extra protection. · Touch phone compatible. · Velcro opening cuff. · Soft polyester lining inside

4RACE



SPORT TOURING LEATHER

4R...

130963

Sporty, reinforced and comfortable gloves.

Man

XXS | XS | S | M | L | XL | XXL | 3XL | 4XL

Many protection solutions like shock absorbing protectors, reinforced palm and wrist. Very comfortable thanks to stretch leather panels on fingers and perforated zones.



Color variations



10133

BLK/RED



10001

BLACK



10002

BLK/WHT

Materials

Calf leather, Clarino.

Technical Solutions

Shock absorbing protections on knuckles and fingers. · Clarino palm. · Reinforcement panels on palm and little finger. · PU flap closure and velcro. · High-grip reinforcement on handlebar grips. · Abrasion resistant reinforcements on wrist. · Stretch leather panels on fingers. · Perforated leather panels.

SPYKE 2019

SPORT & SHORT GLOVES



131033

Highly ventilated, short leather gloves.

Man

XXS | XS | S | M | L | XL | XXL | 3XL | 4XL

Comfortable and very good for riding in hot weather thanks to mesh on the back of the hand. Leather reinforcements on the parts that are the most exposed for abrasion.



SPYKE 2019



Color variations —



BLACK

Materials

Calf leather, mesh, Clarino

Technical Solutions

Clarino palm. · Leather reinforcements on fingers and all part liable for shocks and abrasions. · Special construction on fingers with stretch fabric. · Mesh on the back of the hand. · Adjustable velcro wrist strap



4RACE



TECH SHORT

4R...

131030

Racing, soft gloves for riders who are looking for comfort and breathability.

Sport gloves with elastic lycra to provide the best comfort and breathability. Many reinforcements on fingers and palm.

Man

XXS | XS | S | M | L | XL | XXL | 3XL | 4XL



Color variations



10101
BLACK



10134
BLK/RED



10102
BLK/WHT

Materials

Stretch fabric. Clarino

Technical Solutions

Stitched PU knuckles and phalanges protections. · Eva padding on the thumb. · Breathable fabric on back. · Clarino palm with double reinforcements. · Cuff closure with velcro. · Printed applications on multi-grip palm and fingers. · Elastic lycra inside the fingers for better comfort and breathability.

SPYKE 2019

SPORT & SHORT GLOVES

TOUR CODE



**DRY
TECNO
FABBRIC
TOURING
/ ADV
JACKETS**



120550

Best touristic jacket for any weather conditions with many pockets and adjustable points

Man

38 | 40 | 42 | 44 | 46 | 48 | 50 | 52 | 54 | 56 | 58 | 60 | 62

DRY-TECNO membrane possible to use as a separate jacket and removable thermal liner make the jacket best for any weather conditions. X-STRETCH panels, many adjustable points and many air vents provide best comfort available. Removable CE-approved shoulder and elbow protectors, reflective zones and a pocket for optional back protector care about the rider's safety. Many pockets ensure possibility of carrying all needed things.



Color variations



10185
BLK/ANTRA



10401
GREY/BLK



10001
MUD/ANTRA

Materials

100% Nylon soft polyamide with Teflon® treatment. Net inserts: 100% high-strength polyester. Inside fixed poly-mesh lining. Removable, waterproof, breathable interior membrane. The inner DRYTECNO membrane can be used as a separate jacket. Removable interior thermal padding in polyester and polyamide, the quilting reproduces the "down jacket" effect improving the insulation. TEX STRONG fabric on shoulders and elbows.

Technical Solutions

100% waterproof. Removable thermal padding with breathable 3D mesh zones and interior membrane. Removable sleeves with adjustment system with zippered gusset placed on the elbow. X-STRETCH panels on sides and inner sleeves. Removable CE approved shoulder and elbow protectors. Pocket for NEW CE level 2 SOFT BACK PROTECTOR size 2. Folding frontal pockets for ventilation. Zip adjustable ventilation on front, back, sleeves and forearms. 5 front pockets, 4 of them waterproof. 1 big waterproof pocket on back, it is removable. 3 internal pockets. Pocket with hole on back for Hydropack. Velcro waist adjustment, button wrist and calf adjustment. Reflective zones on sleeves. Stretch device for joining jacket/pant. · Protectors approved with PN-EN-1621-1:2013



Highly functional jacket ready for the longest adventure

2 air vents on the chest and 2 at the back provide best ventilation system available. Many adjustable points ensure best fit. Seams construction according to FprEN 17092 : 2018 standard and shoulder&elbow SAFETECH protectors to provide the best safety level.

Man 38 | 40 | 42 | 44 | 46 | 48 | 50 | 52 | 54 | 56 | 58 | 60 | 62



TOP OF THE RANGE



Color variations



10164

BLK/FLUOVELL



10401

GREY/BLK

Materials

Shell fabric : 100% Polyester 600Dx600D. PU Coated, Water Repellent coating. YKK Zippers & YKK Cosmo Hook & Loops

Technical Solutions

2 air ventilation on the chest and 2 on the back. Reflective accordance with EN 20471 standard. Multiple pocket for storage, as well Napoleon pocket inside the Jacket. Adjustable straps on elbow and biceps area to have snug fit and to avoid extra fabric flapping during high speed. Neoprene padding on the top for the collar for extra comfort. All stitching areas for the safety seams construction according to FprEN 17092 : 2018 Standard. Adjustable straps on the waist for more comfortable fits. 100% Polyester mesh lining with antistatic and antibacterial and extra soft finish for good direct skin touch feel. Shoulder & Elbow protectors with Safe Tech Protector. Evolution system hook on shoulder and inner arms.

***WATERRESISTANT
& WINDBREAKING
VENTED TEXTILE
TOURING JACKETS***



Windbraking touring jacket for those seeking for adventure

Removable CE-approved shoulder and elbow protectors and pocket for optional back protector provide best safety level. 7 pockets ensure that everything needed will be available to carry. Many adjustable points ensure best fit and removable REISSA membrane makes it possible to ride in any weather conditions.

Man 38 | 40 | 42 | 44 | 46 | 48 | 50 | 52 | 54 | 56 | 58 | 60 | 62



Color variations



10034

GREY



10001

BLACK



00001


MUD

Materials

Outside fabric 100% NYLON SOFT. High-strength 100% polyester mesh panels. Fixed inner poly-mesh lining. Removable REISSA membrane.

Technical Solutions

Removable CE approved shoulder and elbow protectors. Pocket for CE level 2 Certified HSS FOLD BACK PROTECTOR or NEW CE SOFT PROTECTOR size 2. 6 external pockets, 1 inner pocket. Adjustable button collar and wrist closure. EVOLUTION SYSTEM hook on shoulders and inner arms. Adjustable waist with velcro. Sleeves adjustment to prevent billowing. Reflective zones on front and back. SHV (Spyke High Visibility) Integrated System on arms. Stretch device for joining jacket/pants, with universal zip fastening and velcro.



**VENDED
TEXTILE
JACKET**



Safe and comfortable touristic jacket for all riders who want to be clearly visible on the road

Reflective zones on front, back and sleeves make the rider being clearly visible on the road. Removable CE-approved shoulder and elbow protectors and pocket for optional back protector provide best safety level. 4 pockets and many adjustment points provide best riding comfort.

Man 38 | 40 | 42 | 44 | 46 | 48 | 50 | 52 | 54 | 56 | 58 | 60 | 62



Color variations



1
0
0
1
BLACK



1
3
0
1
GRY/BLK

Materials

Outside fabric: 100% poly 600D.
Mesh inserts 100% high-strength polyester.

Technical Solutions

Removable CE approved shoulder and elbow protectors. · Pocket for CE level 2 Certified HSS FOLD BACK PROTECTOR size 2 or NEW CE SOFT PROTECTOR size 2. · Stretch inserts on armhole. · 2 external pockets. · 2 internal pockets. · Button collar and wrist closure. · Adjustable velcro waist. · Sleeves adjustment to prevent billowing. · Reflective zones on front, sleeves and back. · Waist clip for connection to pants.



120686

Safe and comfortable touristic jacket for all riders who want to be clearly visible on the road

Man

38 | 40 | 42 | 44 | 46 | 48 | 50 | 52 | 54 | 56 | 58 | 60 | 62

Reflective zones on front, back and sleeves make the rider being clearly visible on the road. Removable CE-approved shoulder and elbow protectors and pocket for optional back protector provide best safety level. 4 pockets and many adjustment points provide best riding comfort.



SPYKE 2019



Color variations



120686
BLACK

VENTED TEXTILE JACKET

Materials

Outside fabric 100% polyester 600D. High-strength 100% polyester mesh panels. Fixed inner poly-mesh lining.

Technical Solutions

Removable CE approved shoulder and elbow protectors. · Pocket for NEW CE SOFT PROTECTOR size 2. · 2 external pockets. · 1 inner pocket. · Adjustable button collar. · Adjustable waist with velcro. · Reflective zones on front and back.



**SOFT
SHELL &
INSULATOR
JACKET**



120620

Enjoy your casual ride with a great overall jacket

Man

38 | 40 | 42 | 44 | 46 | 48 | 50 | 52 | 54 | 56 | 58 | 60 | 62

Equipped with outer shoulder and elbow TPU protection shells, also contains places for CE certified back, elbow and shoulder protectors. The jacket is windproof thanks to elastic inner cuff and bottom drawstring. The rider's safety is provided by reflective front and back zones.



Color variations



1
0
0
1
1
BLACK



1
3
1
0
1
RED



1
3
0
0
3
OLIVRN

Materials

Outside softshell fabric: 97% polyester, 3% spandex

Technical Solutions

Outer shoulder and elbow TPU (Thermoplastic Polyurethane Elastomer) protection shells. · Inner arrangement for CE level 2 certified HSS FOLD BACK PROTECTOR size 2 or NEW CE SOFT PROTECTOR size 2. · Inner arrangement for CE approved KIT ELBOW PROTECTION and KIT SHOULDER PROTECTION. · Shoulder, elbow and forearm inner padding. · Reflective zones front and back. · 3 Internal pockets. · 1 external pocket. · Elastic windproof internal cuff. · Bottom drawstring.

**DRY
TECNO
FABRIC
TOURING
/ ADV
PANTS**



120750

Premium textile pants for all weather conditions

Man

38 | 40 | 42 | 44 | 46 | 48 | 50 | 52 | 54 | 56 | 58 | 60 | 62

Removable, breathable and waterproof DRY-TECNO membrane and removable thermal liner make it possible to ride in any weather conditions. TEX-STRONG inserts for best comfort. Reinforcements with 100% Nylon soft polyamide with Teflon treatment.



Color variations



10185
BLK/ANTRA



10401
GRY/BLK

Materials

Outside fabric and reinforcements 100% Nylon soft polyamide with Teflon® treatment. Fixed inner poly-mesh lining. Removable, waterproof, breathable inner membrane DRYTECNO Removable inner thermal padding in polyester and polyamide. TEX-STRONG fabric on the back, knee and inner thigh.

Technical Solutions

100% waterproof. Dynamic seamless construction friction areas on pants and inside lining. · Flex zones on knees, stretch fabric on thighs, inner thigh and back of the knee. · Ventilated thigh and shin panels, adjustable with zip fasteners. 4 external. 2 of them waterproof and folding pockets for ventilation. Removable CE approved knee protectors · Shock absorbing side paddings. Reflective zones on calves and sides. · Double velcro adjustable waist closure. · Adjustable bottom closure with zip and gussets. Waist zip connection to jacket. Removable braces.

TOUR CODE



EVERGLADE DRY TECNO MAN

120751

Highly functional pants ready for the longest trip

Man 38 | 40 | 42 | 44 | 46 | 48 | 50 | 52 | 54 | 56 | 58 | 60 | 62

Reinforcement at seat area and knee protectors care about the rider's safety. Air ventilation is provided by air vents on tights. Anti-static and anti-bacterial polyester mesh lining, water-repellent coating and nylon stretch insert at crotch area ensure best comfort level.



Color variations



1 0 0 1 1
BLACK



1 0 4 0 1
GRY/BLK

Materials

Shell fabric : 100% Polyester 600Dx600D, PU Coated, Water Repellent coating, Nylon Stretch Fabric at crotch area.

Technical Solutions

Double Fabric Reinforcement at Hip (seat area). · All stitching areas for the safety seams construction According to FprEN 17092:2018 Standard. · YKK Zippers & YKK Cosmo Hook & Loops. · Air ventilation on thighs. · Reflective accordance with EN 20471 standard. · Multiple pocket for storage. 100% Polyester mesh lining with antistatic and antibacterial and extra soft finish for good direct skin touch feel. · 100% virgin polyester Wadding 120 GSM in sandwich between 100% polyester Taffeta 190T, zip out quilt liner. · Knee protectors with Safetech Protector. · Flap over on the Ankle zipper. · Zip for extra room for hip.



120740

Very comfortable and well-ventilated, safe touring pants

Man

38 | 40 | 42 | 44 | 46 | 48 | 50 | 52 | 54 | 56 | 58 | 60 | 62

Dynamic seamless friction areas construction, elastic inserts and ventilated panels provide high-comfort level. Removable CE approved knee protectors and shock-absorbing paddings care about the rider's safety.



Color variations



1
0
0
1
BLACK

Materials

Outside fabric and reinforcements 100% high strength poly 600 with Teflon® treatment. Fixed DRY-TECNO inner poly-mesh lining. Detachable inner poly-mesh lining. Removable inner thermal padding in polyester and polyamide.

Technical Solutions

Dynamic seamless construction on friction areas on pants and inside lining. · Flex zones on knees, stretch fabric on thighs, inner thigh and back of the knees. · Ventilated thigh and shin panels, adjustable with zip fastener. · Removable CE approved knee protectors. · Shock absorbing side paddings. · Reflective zones on calves and legs. · Double velcro adjustable waist closure. Adjustable bottom closure with zip and gussets. · Waist zip connection to jacket.

TOUR CODE



EVONRAY 2 DRY TECNO LADY

120741

Very comfortable and well-ventilated, safe touring pants

Dynamic seamless friction areas construction, elastic inserts and ventilated panels provide high-comfort level. Removable CE approved knee protectors and shock-absorbing paddings care about the rider's safety.

Woman

38 | 40 | 42 | 44 | 46 | 48 | 50 | 52 | 54 | 56 | 58 | 60 | 62



Color variations



100101
BLACK

Materials

Outside fabric and reinforcements 100% high strength poly 600 with Teflon® treatment. Fixed DRY-TECNO inner poly-mesh lining. Detachable inner poly-mesh lining. Removable inner thermal padding in polyester and polyamide.

Technical Solutions

Dynamic seamless construction on friction areas on pants and inside lining. · Flex zones on knees, stretch fabric on thighs, inner thigh and back of the knees. · Ventilated thigh and shin panels, adjustable with zip fastener. · Removable CE approved knee protectors · Shock absorbing side paddings. · Reflective zones on calves and legs. · Double velcro adjustable waist closure. Adjustable bottom closure with zip and gussets. · Waist zip connection to jacket.

**SUMMER
VENTILATED
TEXTILE
PANTS**

TOUR CODE



BORA 2 PANT

120725A

Best-fit touristic pants with many protectors and 4 pockets

Very comfortable thanks to usage of X-STRETCH inserts and adjustable bottom&waist closure. Reflective zones and removable CE approved knee protectors and side paddings provide best safety level. 4 pockets ensure possibility of carrying needed things.

Man

38 | 40 | 42 | 44 | 46 | 48 | 50 | 52 | 54 | 56 | 58 | 60 | 62



Color variations



1
0
0
1
1
BLACK

Materials

Outside fabric 100% NYLON SOFT. High-strength poly-mesh panels. Groin X-STRETCH inserts. Fixed inner poly-mesh lining.

Technical Solutions

Removable CE approved knee protectors. height adjustable. · Side removable paddings. · Flex zones on knees and back waist. 2 frontal pockets. · 2 back pockets. · Double regulation adjustable waist closure. · Reflective zones on the back Adjustable bottom closure with zip and velcro.

SPYKE 2019

SUMMER VENTED TEXTILE PANTS



***WATERPROOF
GLOVES***



Professionally designed gloves for globetrotters

Man

XXS | XS | S | M | L | XL | XXL | 3XL | 4XL

Many protection solutions like TPU shock absorbing protectors, as well as padding and leather inserts. Good comfort and breathability thanks to Tex strong fabric.



Color variations



BLACK



GRY/BLK

Materials

Calf leather, Tex Strong fabric, Drytecno membrane.

Technical Solutions

TPU shock absorbing protections on knuckles and palm. · Outer wrist with moulded leather. · Thermal padding. · Soft touch lining. · EVA paddings on phalanges, thumb and palm. · Double leather layer on palm, little finger. · PU shock absorbing padding on the back of the hand. · High-grip reinforcements in microfiber on handlebar grips. · Base of the fingers in Tex Strong fabric for better comfort and breathability.



131032

Touring glove that gives you comfort and control in harsh weather conditions

Man

XXS | XS | S | M | L | XL | XXL | 3XL | 4XL

Gloves matching high safety standards through protectors on knuckles, paddings on all the areas that are the most exposed for abrasion and leather reinforcements. Closure at a wrist with an adjustable velcro.



Color variations



BLACK

SPYKE 2019

WATERPROOF GLOVES

Materials

Softshell, calf leather, Clarino, Drytecho membrane.

Technical Solutions

Semi-rigid moulded protections on knuckles. · Soft-touch lining. · Shock absorbing padding on phalanges, palm, back and lower palm. · Grip inserts on palm. · Leather reinforcements on little finger and palm. · Clarino palm. · Adjustable velcro wrist closure.

TOUR CODE



TOURING 2 DRY TECNO LADY

131036

Touring glove that gives you comfort and control in harsh weather conditions

Shock-absorbing paddings almost all around the hand. Leather reinforcements to provide the best resistant for abrasion. Inserts on the palm to ensure a good grip.

Woman

XXS | XS | S | M | L | XL | XXL | 3XL | 4XL



Color variations



1
0
0
1
1
BLACK

Materials

Softshell, calf leather, Clarino, Drytecho membrane

Technical Solutions

Fit for lady. · Semi-rigid moulded protections on knuckles. · Soft-touch lining. · Shock absorbing padding on phalanges, palm, back and lower palm. · Grip inserts on palm. · Leather reinforcements on little finger and palm. · Clarino palm. Adjustable velcro wrist closure



131034

It's always a good time to start your riding adventure.

Man

XXS | XS | S | M | L | XL | XXL | 3XL | 4XL

High level of comfort and a good fit thanks to stretch inserts at the wrist. Reinforcements on palm providing the best grip.

DRYTECNO

[Thermal]*



Color variations



BLACK

Materials

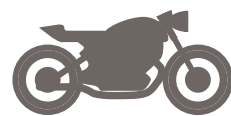
Tex Strong, membrane, padding

Technical Solutions

Velcro wrist closure. · Stretch wrist inserts. · High-grip reinforcements on handlebar grips.



CONTEMPORARY



**CRUISER,
CAFE
RACER
& URBAN
LEATHER
JACKET**



CONTEM PORARY



STRIPE GP2 MAN

110360

Stylish and elegant leather jacket for city & urban riding!

Provides the best protection level by usage of cowhide and removable CE-approved protectors. It is well-ventilated thanks to 2 air vents at the back. 8 pockets make it possible to carry all needed things.

Man 38 | 40 | 42 | 44 | 46 | 48 | 50 | 52 | 54 | 56 | 58 | 60 | 62



TOP OF THE RANGE



Color variations



110101
BLACK



110104
BLK/ICE

Materials

Soft-Touch 0.9/1.0 mm cow leather. X-STRETCH fabric on shoulder, arms and sides. Inside fixed poly lining. Removable interior thermal padding in polyester and polyamide.

Technical Solutions

Removable CE approved knee and elbow protectors. · Pocket for NEW CE level 2 SOFT BACK PROTECTOR size 2. · 2 air vents on the back. · 4 external pockets. · 4 internal pockets. · Button collar closure. · Zip and button wrist closure. · Adjustable waist with strap and velcro.

SPYKE 2019

CRUISER, CAFE RACER & URBAN LEATHER JACKET



110361

A safe and stylish leather jacket for ladies who are looking for high protection level and good ventilation

Woman

38 | 40 | 42 | 44 | 46 | 48 | 50 | 52 | 54 | 56 | 58 | 60 | 62

Cowhide leather jacket with removable protectors and pocket for back protector. Good ventilation system thanks to 2 air vents on the back and perforated inserts. Many pockets to carry anything needed.



Color variations



110361
BLACK



10401
BLK/ICE

Materials

Soft-Touch 0.9/1.0 mm cow leather. X-STRETCH fabric on shoulder, arms and sides. Inside fixed poly lining. Removable interior thermal padding in polyester and polyamide.

Technical Solutions

Fit for lady. · Removable CE approved knee and elbow protectors. · Pocket for NEW CE level 2 SOFT BACK PROTECTOR size 1. · Inserts in perforated leather. · 2 air vents on the back. · 3 external pockets. · 4 internal pockets. · Button collar closure. · Zip and button wrist closure. · Adjustable waist with strap and velcro.



CONTEMPORARY



RIDE MAN

110340

Safe and comfortable street&urban style leather jacket

Man

38 | 40 | 42 | 44 | 46 | 48 | 50 | 52 | 54 | 56 | 58 | 60 | 62

Safe thanks to CE-approved shoulder and elbow protectors and back normal perforated foam pad. Usage of X-STRETCH fabric inserts provide best comfort and neoprene collar absorbs sweat. Removable thermal liner makes it possible to ride on cold and warm days.



Color variations



110101
BLACK



110005
BROWN

Materials

Soft-Touch 0.9/1.0 mm cow leather. X-STRETCH fabric on shoulder, arms and sides. Inside fixed poly lining. Removable interior thermal padding in polyester and polyamide.

Technical Solutions

Premium cow hide outer shell construction. · Soft fix mesh interior lining with document pocket. · Thermal removable quilt liner with mobile and document pocket. · Metal no. 5 zipper at chest, sleeves, waist pockets and front opening. · Waist adjuster belts. Neoprene at collar for sweat absorbing. · Belt loop for connecting jacket to pant. · Hand warming pockets. · CE approved shoulder and elbow protectors, back normal perforated foam pad.

SPYKE 2019
CRUISER, CAFE RACER & URBAN LEATHER JACKET

**110341****Comfortable lady leather jacket for any weather conditions****Woman**

38 | 40 | 42 | 44 | 46 | 48 | 50 | 52 | 54 | 56 | 58 | 60 | 62

Best for any weather conditions thanks to soft mesh inner lining, perforated panels and removable thermal liner. Stylish, urban style connected with X-STRETCH fabric for the best fit and comfort.

FIT FOR LADY

REINFORCED THREAD

Loose Layers

[Thermal]*

REMOVABLE In-Liner

SSD

**Color variations**

BLACK

Materials

Soft-Touch 0,9/1,0 mm cow leather. X-STRETCH fabric on shoulder, arms and sides. Inside fixed poly lining. Removable interior thermal padding in polyester and polyamide.

Technical Solutions

Premium leather outer shell construction. · Soft fix mesh interior lining with document pocket. · Thermal removable quilt liner with mobile and document pocket. · Antic silver no. 5 METAL front opening zipper. · Auto lock zippers on sleeves. · Hand warming pockets. · Belt loop for connecting jacket to pant. · Perforated panels for air ventilation. · Spyke logo buttons. · CE approved shoulder and elbow protectors, back normal perforated foam pad.



110342

Style and safety come first - perfect leather jacket for city riders

CE-approved shoulder and elbow protectors and back normal perforated foam pad. Usage of X-STRETCH fabric inserts provide best comfort as well as perforated panels. Removable thermal liner makes it possible to ride almost every day of a season!

Man 38 | 40 | 42 | 44 | 46 | 48 | 50 | 52 | 54 | 56 | 58 | 60 | 62



Color variations



13101

RED

Materials

Soft-Touch 0.9/1.0 mm buffalo leather. X-STRETCH fabric on shoulder, arms and sides. Inside fixed poly lining. Removable interior thermal padding in polyester.

Technical Solutions

Premium leather outer shell construction. · Soft fix mesh interior lining with document pocket. · Thermal removable quilt liner with mobile and document pocket. · Antic silver no. 5 METAL front opening zipper. · Auto lock zippers on sleeves. · Hand warming pockets. · Belt loop for connecting jacket to pant. · Spyke logo buttons. · CE approved shoulder and elbow protectors, back normal perforated foam pad.

SPYKE 2019
CRUISER, CAFE RACER & URBAN LEATHER JACKET



110343

Style and safety come first - perfect leather jacket for city riders

Woman

38 | 40 | 42 | 44 | 46 | 48 | 50 | 52 | 54 | 56 | 58 | 60 | 62

CE-approved shoulder and elbow protectors and back normal perforated foam pad. Usage of X-STRETCH fabric inserts provide best comfort as well as perforated panels. Removable thermal liner makes it possible to ride almost every day of a season!



Color variations —



1
3
1
0
1

RED

Materials

Soft-Touch 0,9/1,0 mm buffalo leather. X-STRETCH fabric on shoulder, arms and sides. Inside fixed poly lining. Removable interior thermal padding in polyester.

Technical Solutions

Fit for Lady. Premium leather outer shell construction. Soft fix mesh interior lining with document pocket. Thermal removable quilt liner with mobile and document pocket. Antic silver no. 5 METAL front opening zipper. Auto lock zippers on sleeves. Hand warming pockets. Belt loop for connecting jacket to pants. Spyke logo buttons. CE approved shoulder and elbow protectors, back normal perforated foam pad.



CONTEM PORARY



TENACY R2 MAN

110389

Comfortable and safe jacket kept in street&urban style for everyone!

Removable CE-approved protectors provide best safety level. Perforated leather inserts, elastic X-STRETCH inserts and adjustable waist ensure high-comfort. Removable thermal liner for every rider's comfort.

Man

38 | 40 | 42 | 44 | 46 | 48 | 50 | 52 | 54 | 56 | 58 | 60 | 62



Color variations



1
0
0
1
1
BLACK

Materials

Soft-Touch 0.9/1.0 mm cow leather. X-STRETCH fabric on shoulder, arms and sides. Inside fixed poly lining. Removable interior thermal padding in polyester and polyamide.

Technical Solutions

Removable CE approved knee elbow protectors. · Pocket for NEW CE level 2 SOFT BACK PROTECTORS size 2. · Insert in perforated leather. · 4 external pocket. · 2 internal pocket. · Button collar closure. · Zip wrist closure. · Adjustable waist with strap and velcro.

SPYKE 2019

CRUISER, CAFE RACER & URBAN LEATHER JACKET



110390

Street & urban lady leather jacket with a good ventilation system

Woman

38 | 40 | 42 | 44 | 46 | 48 | 50 | 52 | 54 | 56 | 58 | 60 | 62

Good safety level thanks to removable, CE-approved protectors. Good ventilation by the usage of perforated leather zones. X-STRETCH fabric on many areas provides the high comfort level.



Color variations



1
3
1
0
1
BLACK

Materials

Soft-Touch 0.9/1.0 mm cow leather. X-STRETCH fabric on shoulder, arms and sides. Inside fixed poly lining. Removable interior thermal padding in polyester and polyamide.

Technical Solutions

Fit for lady. · Removable CE approved knee and elbow protectors. · Pocket for NEW CE level 2 SOFT BACK PROTECTOR size 1. · Inserts in perforated leather. · 4 external pockets. · 2 internal pockets. · Button collar closure. · Zip and button wrist closure. · Adjustable waist with strap and velcro.

SPYKE 2019

CRUISER, CAFE RACER & URBAN LEATHER JACKET



**CONTEMPORARY
RIDING
JACKETS**



120610

Quality, comfort and safety in one jacket

Man

38 | 40 | 42 | 44 | 46 | 48 | 50 | 52 | 54 | 56 | 58 | 60 | 62

CE-approved shoulder and elbow protectors provide best safety level. Possibility of including CE soft protector in the pocket at the back. Microfiber collar and wrist ensure nice-in-touch comfort. Adjustable waist make the jacket fit very well.



Color variations



1 0 0 0 1
BLACK



1 0 0 1 6
ICE



1 3 1 0 1
RED

Materials

Outside fabric 100% polyester
450D Fixed breathable inner
poly-mesh lining.

Technical Solutions

Removable CE approved shoulder and elbow protectors. · Pocket for NEW CE level 2 SOFT BACK PROTECTOR size 2. · 4 external pockets. · 2 inner pockets. · Microfiber collar and wrist with bottom closure. · Reflective zones on arms and back. · Adjustable waist with velcro.



120611

Fashionable, textile lady jacket for any woman who is looking for best protection

Textile jacket with many CE-approved, removable protectors. 4 pockets to carry needed things. Reflective zones to make the rider more visible on the road.

Woman

38 | 40 | 42 | 44 | 46 | 48 | 50 | 52 | 54 | 56 | 58 | 60 | 62



Color variations



1
0
0
1
1
BLACK



1
0
0
1
6
ICE



1
3
0
1
1
RED

Materials

Outside fabric 100% polyester 450D. Fixed breathable inner poly-mesh lining.

Technical Solutions

Fit for Lady. · Removable CE approved shoulder and elbow protectors. · Pocket for NEW CE level 2 SOFT BACK PROTECTOR size 2. · 4 external pockets. · 2 inner pockets. · Microfiber collar and wrist with bottom closure. · Reflective zones on arms and back. · Adjustable waist with velcro.



**CONTEM
PORARY
JACKETS**

CONTEMPORARY



STREET

170604

Stylish jacket with many pockets to hold everything needed

Street and Urban jacket for man looking for a very contemporary & modern garment. Comfortable and practical at the same time, thanks to many inner and outer pockets. It has CE approved shoulder and elbow protectors and back foam pad.

Man

2XS | XS | S | M | L | XL | XXL | 3XL | 4XL



Color variations



1
0
0
1
BLACK

Materials

Combination of 100% goat leather with 98% cotton and 2% elastan. Denim fabric. Fixed breathable inner lining.

Technical Solutions

Premium leather and denim outer shell construction. - Fix polyester quilt thermal lining inside with mobile and document pocket. - Spyke logo buttons. - Waist adjustable belts. - Chest and waist pockets. - Belt loop for connecting jacket to pant. - CE approved shoulder and elbow protectors, back normal perforated foam pad.

SPYKE 2019 CONTEMPORARY JACKETS

BOMBER ONE



CONTEM PORARY

170605

Warm and comfortable jacket, perfect for riding even in bad weather conditions

Man

2XS | XS | S | M | L | XL | XXL | 3XL | 4XL

Very warm thanks to the lining that also has pockets in it. You won't get wet because of a waterproof and breathable reissa membrane. Rib knit on cuff and bottom will make the jacket fit very well.



Color variations



BLACK



OLIVRN

Materials

Cotton fabrix with wax coating.
Fixed breathable inner lining.

Technical Solutions

Removable CE approved shoulder and elbow protectors. · Pocket for NEW CE level 2 SOFT BACK PROTECTOR size 2. · 2 external pockets. · 2 inner pockets. · Micro fiber collar.





**DENIM
PANTS
/ CHINO**

**120760****High protection level connected with casual style****Man**

26 | 28 | 30 | 32 | 34 | 36 | 38 | 40 | 42

Matching high safety standards by the usage of kevlar layers. Outer pockets for knee protectors for a comfortable access, as well as inner hip protectors pockets. Four outer pockets for carrying own stuff.

**Color variations**

10041

NAVY BLUE



10001

BLACK

Materials

High protection level connected with casual style

Technical Solutions

Washed process denim pant cotton and spandex construction. · Outer knee protector pockets for easy access. · Internal hip protector pockets. · Protective Kevlar 60% cotton and 40% kevlar inside knee and back area. · Cotton lining inside for pockets. · Two front and two back pockets.



CONTEM PORARY



RACER

120761

Ride or walk, the choice is yours, this denim is great!

Matching high safety standards by the usage of kevlar layers. Inner knee and hip protectors pockets. Four outer pockets for carrying own stuff.

Man

2XS | XS | S | M | L | XL | XXL | 3XL | 4XL



Color variations



10040

BLUE

Materials

Denim pant cotton and spandex.

Technical Solutions

Washed process denim pant cotton and spandex construction. · Inside knee and hip protector pockets. · Protective Kevlar 60% cotton and 40% kevlar inside knee and back area. · Cotton lining inside for pockets. · Two front and two back pockets.



120762

Travelling is moving, movement is life.

Man

26 | 28 | 30 | 32 | 34 | 36 | 38 | 40 | 42

Safe thanks to kevlar and easy going style of denim trousers. Safety is now fashionable.



Color variations



1
0
0
4
0
BLUE

Materials

Denim pant cotton and spandex

Technical Solutions

Washed process denim pant cotton and spandex construction. · Inside knee and hip protector pockets. · Protective Kevlar 60% cotton and 40% kevlar inside knee and back area. · Cotton lining inside for pockets. · Two front and two back pockets.



SPYKE 2019

DENIM PANTS / CHINO

**CONTEM
PORARY
FASHION
RIDING
GLOVES**

**131016****Short leather gloves for urban riders, stylish and safe****Man**

XXS | XS | S | M | L | XL | XXL | 3XL | 4XL

Product matching high safety standards thanks to hidden hard knuckles and fingers protectors and reinforcements on palm. Possibility of using the phone when the gloves are on.

**Color variations**1
101001
BLACK1
33005
BROWN**Materials**

Coat leather.

Technical Solutions

Premium leather short gloves. · Hard hidden knuckle and finger protections. · Reinforced layers of leather at palm for extra protection. · Touch phone compatible. · Velcro opening cuff. · Soft polyester lining inside.





131017

Ventilated version of stylish, leather Biarritz gloves

Product matching high safety standards thanks to hidden hard knuckles and fingers protectors as well as reinforcements on palm and padding on the areas that are the most exposed for abrasion. Possibility of using the phone when the gloves are on. Well-ventilated by usage of perforations.

Man

XXS | XS | S | M | L | XL | XXL | 3XL | 4XL



Color variations



1
0
0
1
1
BLACK



1
3
3
0
0
5
BROWN

Materials

Coat leather

Technical Solutions

Premium leather short gloves. · Perforated leather for air ventilation. · Hidden knuckle and finger protections. · Reinforced layers of leather at palm for extra protection. · Touch phone compatible. · Velcro opening cuff. · Padding at crucial areas. · Soft polyester lining inside.



131015

Urban gloves perfect for everyday commuting

Man

XXS | XS | S | M | L | XL | XXL | 3XL | 4XL

Protection of knuckles and fingers by usage of shock absorbing protectors. Reinforcements on the back and palm.



Color variations



BLACK

Materials

Softshell, Clarino and stretch fabric

Technical Solutions

Shock absorbing protections on knuckles and fingers. · Microfiber reinforcements on back and palm. · Reflex zones on back. · Adjustable velcro wrist closure.



ACCESSORIES

NEW CE SOFT PROTECTOR MIS.1



4RACE
4R...

141131

CE certified soft back protector for any jacket with a pocket

Certified with CE level 2. Perfect for textile or leather short jacket. Good ventilation system thanks to 10 ventilation holes.



Materials

Viscoflex

Technical Solutions

CE Level 2 Certified soft back protection. · Designed to be placed in the back pocket of textile jacket, textile or leather short jacket. 10 holes for ventilation.



SPYKE 2019

NEW CE SOFT PROTECTOR MIS.2



141132

CE certified soft back protector for any jacket with a pocket

Certified with CE level 2. Perfect for textile or leather short jacket. Good ventilation system thanks to 10 ventilation holes.



Materials

Viscoflex

Technical Solutions

CE Level 2 Certified soft back protection. · Designed to be placed in the back pocket of textile jacket, textile or leather short jacket. · 10 holes for ventilation



ACCESSORIES



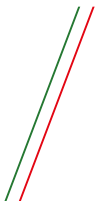
Pair of soft shoulder protectors with CE certificate

Ergonomic shape FLEXIN CUT that makes them very comfortable.
Certified with CE EN 1621-1 (type A) level 2.



Materials

Viscoflex



Technical Solutions

Pair of soft CE EN 1621-1 (type A) level 2 certified shoulder protectors. · Ergonomic shape FLEXIN CUT with Dynamic 360° philosophy

SPYKE 2019



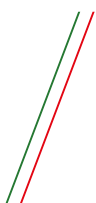
Pair of soft shoulder protectors with CE certificate

Ergonomic shape FLEXIN CUT that makes them very comfortable.
Certified with CE EN 1621-1 (type A) level 2.



Materials

Viscoflex



Technical Solutions

Pair of soft CE EN 1621-1 (type A) level 2 certified shoulder protectors. · Ergonomic shape FLEXIN CUT with Dynamic 360° philosophy

SPORT 2PC LEATHER SUITS

KIT ELBOW PROTECTOR



4RACE
4R...

141153

Pair of soft elbow protectors with CE certificate

Ergonomic shape FLEXIN CUT that makes them very comfortable.
Certified with CE EN 1621-1 (type A) level 2.

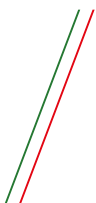


Materials

Viscoflex

Technical Solutions

Pair of soft CE EN1621-1 (type A) level 2 certified elbow protectors. Ergonomic shape FLEXIN CUT with Dynamic 360° philosophy.



KIT KNEE PROTECTOR (WITH VELCRO)



141154

CE certified best stay-in-place knee protectors

Ergonomic shape FLEXIN CUT that makes them very comfortable.

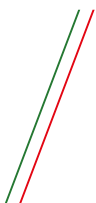


Materials

Viscoflex

Technical Solutions

CE Level 2 Certified soft knee protection. · Designed to be placed in the pocket of pants.





Sliders designed specially for wet track

Racing sliders that will stay at their place all the time. Mounted with a strong velcro.



Materials

Viscoflex

Technical Solutions

Pair of polyurethane sliders stuck to the leather with highly resistant velcro.



TRACK SLIDER RACE SUIT 2 PIECE

Pair of the best racing sliders, very strong and durable

Racing sliders that will stay at their place all the time. Mounted with a strong velcro. Dedicated for 2 piece race suits and pants.



Materials

Viscoflex

Technical Solutions

Pair of polyurethane sliders stuck to the leather with highly resistant velcro.



TRACK SLIDER RACE SUIT



4RACE

4R...

141124

Pair of the best racing sliders, very strong and durable

Racing sliders that will stay at their place all the time. Mounted with a strong velcro. Dedicated for 1 piece racing sport suits.



Materials

Viscoflex

Technical Solutions

Pair of polyurethane sliders stuck to the leather with highly resistant velcro. · Pair. · For one piece racing sport suit.



SUSPENDERS



141110

Universal pant suspenders

Unisex

46 | 48 | 50 | 52 | 54 | 56 | 58 | 60 | 62



TECH

FEATURES

ICONS

SIZE

CHART

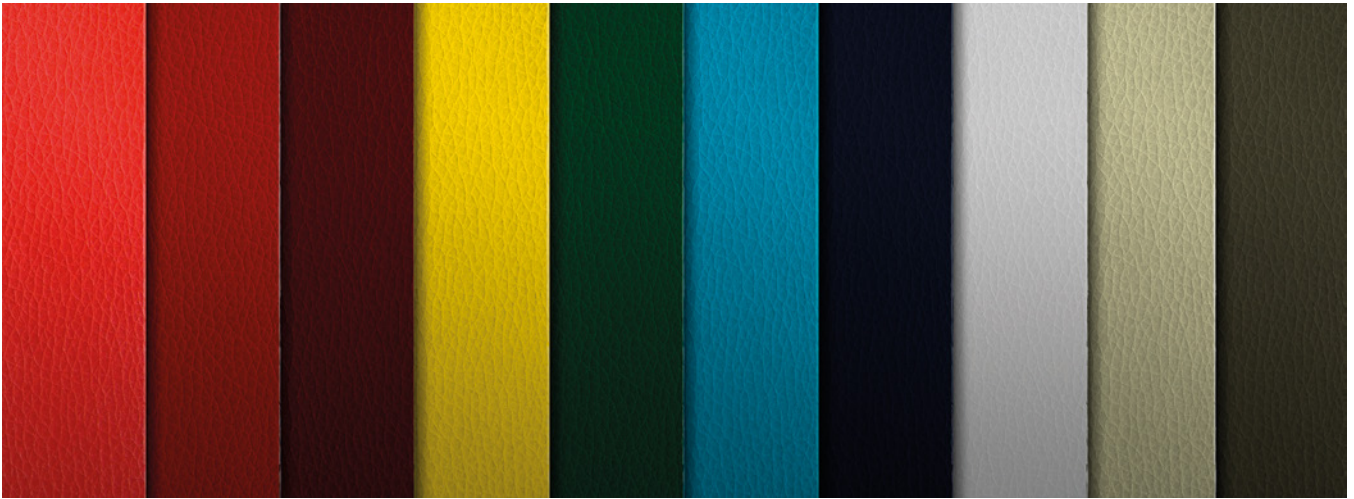
TECH FEATURES

PELLE TECNICA PER USO MOTOCICLISTICO

Uso di pellami lavorati in Italia, con un'importante varietà di gamma, dove la scelta della materia prima nasce dalle performance richieste al capo.

HIGH TECH LEATHER FOR RIDING PURPOSES

Use of leathers treated in Italy, with a wide diversity of range, where the selection of raw materials arises from the performance requested from the garment.



01 - Pelle bovina smerigliata

Morbida, alta resistenza a trazione e strappo, spessore 1,2mm/ 1,3mm, idrorepellente.

02 - Pelle rinita a pigmento

È la più resistente ed è il pellame più usato nell'abbigliamento racing grazie alla sua versatilità. La superiore resistenza alla luce e al grao è ottenuta tramite l'applicazione di un lm pigmentato di rinizione; la supercie inoltre può essere stampata, anche in rilievo, oppure serigrafata.

03 - Pelle canguro pieno fiore

Rinita, morbida, idrorepellente, dall'aspetto lucente, che consente così di avere dei capi per un uso sportivo agonistico con il miglior rapporto possibile fra performances meccaniche e leggerezza.

04 - Pelle traforata bovina o di canguro

Morbida, con areazione tecnica che permette di localizzare le prese d'aria solo dove è indispensabile, lontano dalle cuciture, garantendo quindi oltre ad un'estetica migliore, anche una maggiore sicurezza in caso di caduta.

05 - Crosta bovina

Resistente per le parti più impegnative, più esposte a contrasto con oggetti esterni, generalmente utilizzata per inserti scamosciati, dalla "mano" vellutata e calda, molto confortevole al tatto.

06 - Pelle bovina e ovina trattata anilina

È quella che ha l'aspetto più naturale, in quanto è priva di qualunque rinizione coprente. Conserva le caratteristiche singolari del manto dell'animale per questo vi è la possibilità di intravedere dierenti sfumature di colore. Il pellame lavorato all'anilina viene tinto, ma non è rinito con alcuna pellicola a polimeri o pigmenti. Si applica un sottile strato di lacca trasparente, che ha la funzione di proteggere dalle macchie e conferisce un tono di lucidità.

07 - Pelle vintage

Tipologia di articoli concepiti per avere un look unico e personale grazie ai particolari trattamenti di concia a base di resine ed ingrassi di origine naturale che enfatizzano con l'utilizzo il caratteristico etto "vissuto".

Gli standard qualitativi garantiscono inoltre elevate solidità dei colori in funzione delle destinazioni d'uso per cui il capo è stato progettato.

01 - Snued cow leather

Soft, high tension and tearing resistance, 1,2mm/1,3mm thick, water repellent.

02 - Pigment nished leather

It is the most resistant and it is the more used leather in racing clothing due to its versatility. The superior resistance to light and scratches is achieved through the application of a nishing pigmented lm; furthermore, the surface may be printed, also embossed, or silk screen printed.

03 - Full grain kangaroo leather

Rened, soft, water repellent, with a shining appearance, which allows in this way to have racing sports clothing with the best possible balance between mechanical performances and lightness.

04 - Kangaroo or cow perforated leather

Soft, with high tech ventilation allowing to locate the air vents only where indispensable, away from the seams, thus ensuring, further than better looks, also better safety in the event of a fall.

05 - Cow split grain

Resistant for the most stressed parts, the more exposed to the contrast with exterior objects, generally used for suede inserts, having a velvety and warm nish, very comfortable to touch.

06 - Aniline treated cow or sheep leather

It's the one with the most natural appearance, because it has no cover nishing. It keeps the unique features of the coat of the animal, for this reason there is the possibility to glimpse dierent shades of colour. The leather treated with aniline is dyed, but it is not nished with any polymeric lm or pigment a thin layer of transparent layer is applied, with the function to protect from stain and to give a touch of shine.

07 - Vintage leather

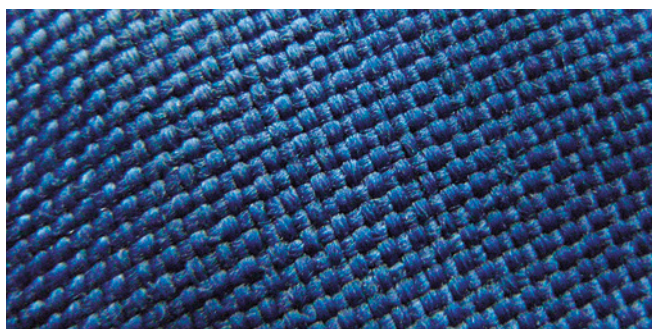
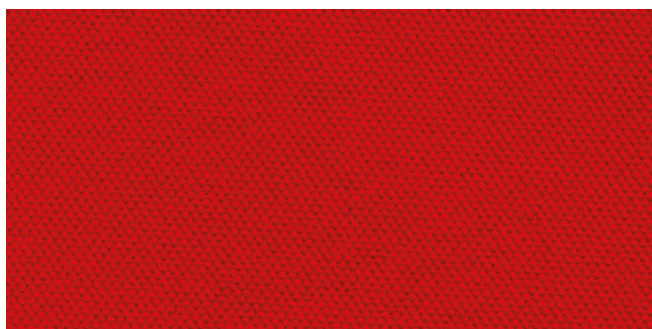
Type of goods designed to have a unique and personal look thanks to peculiar natural sourced resin and grease based tanning treatments which highlight with the use the specic "worn" ect.

The quality standards guarantee as well high solidity of colours in function of the use destination for which the garment was designed.

TESSUTI TECNICI PER USO MOTOCICLISTICO

I capi Spyke utilizzano tessuti ad alta tenacità con speciali lavorazioni che combinano trame bi elastiche e orditi in lati ritorti.

La combinazione e la selezione di speciali fibre di Poliestere 600D, Cordura, Nylon, Rayon, Lycra, con grande resistenza alla trazione, al taglio, al calore e alla lacerazione e dalla bassissima conducibilità elettrica, dalle eccellenti performance meccaniche che vanno sommate a leggerezza e facilità di manutenzione e pulizia, rendono i capi in tessuto adatti all'uso in condizioni climatiche avverse, anche grazie al trattamento di idrorepellenza, garantendo un'adeguata protezione in caso di scivolata. In caso di pioggia, è sufficiente l'asciugatura dei capi all'aria per permettere di riattivare tutte le caratteristiche di oleo e idrorepellenza dei tessuti.



ZIP SPECIALI

I capi tecnici Spyke utilizzano innovativa lampo a spirale di Nylon, altamente resistenti agli sbalzi termici e perfettamente adattabili alle curve del corpo.

Tenacità, resistenza all'utilizzo e all'usura, adattabilità, affidabilità e precisione di chiusura ne caratterizzano le prestazioni.

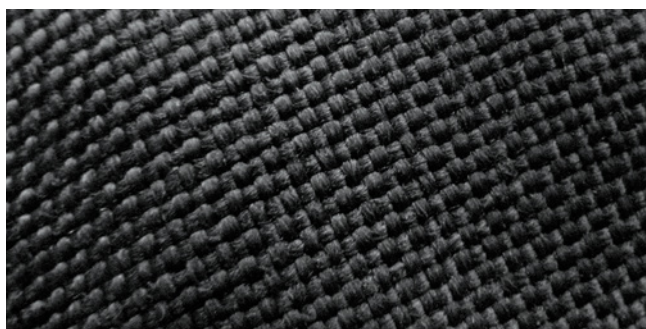
Le tute racing montano speciali zip a lame retardant, in grado di rispondere alle normative in merito alla protezione contro il calore e la fiamma, con un L.O.I. (limit oxygen index) tra 28-30. Nei capi più sportivi e racing si utilizzano le nuove zip con cursore antiottaggio autobloccante.

HIGH TECH FABRICS FOR RIDING PURPOSES

Spyke clothes use high tenacity fabrics with special treatments combining bi-elastic weaves with twisted yarns.

The combination and the selection of special 600D Polyester, Cordura, Nylon, Rayon, Lycra, having high resistance to traction, cut, heat and tearing with the minimum electric conductivity, having excellent mechanical performances which must be added to lightness and easy maintenance and cleaning, make the fabric clothes suitable to be used under adverse weather conditions, also thanks to the water proofing treatment, guaranteeing an appropriate protection in case of slide.

In case of rain, the simple drying of the clothes at the air is enough to reactivate all the oil and water repellence features of the clothes.



SPECIAL ZIPS

Spyke high tech clothes employ innovative Nylon spiral zip closure, having a high resistance to thermal shocks and perfectly adapting to the shapes of the body.

Tenacity, resistance to use and wear, reliability, durability and accuracy of closure characterise their performance.

The racing suits are equipped with flame retardant zips, able to meet the rules on the protection against heat and flame with a L.O.I. (limit oxygen index) ranging from 28 to 30. The sportier and racing clothes use the new zips with auto-locking anti-scooting slider.

ICONS



SSD - SPYKE SYNTHETIC DOWN

Synthetic down insulation offers a light weight, similar loft alternative to natural down.



DRYTECNO

Drytecno is a technology used by Spyke to protect the rider from rain and wind. The polyurethan resin membrane (PU), having a unique structure especially created to be used on the bike, which absorbs and drives out sweat but remains waterproof, ensures maximum protection from external elements. The unique construction of the garments with Drytecno technology creates a wide dry air volume between body and waterproof barrier, strongly reducing the risk of condensation from excessive sweat and contributes to keep constant the skin temperature (eliminating the heat dispersion through direct conduction body-lining-water).



AIR

The AIR products guarantee an appropriate ventilation thanks to extended net inserts or breathable perforated leather of differential weaves, further than the several perforated inserts in the zones where transferring outside of the body heat is needed.



X STRETCH

Special construction technology implying the use panels in innovative Elastomere combined in weaving with polyammidic yarns with high tenacity (x-stretch fabric) to guarantee optimal comfort and t thanks to the bidimensional elasticity. In the racing suit the x-stretch fabric is coupled with a leather panel, which, thanks to special gusset seams stretches lengthwise and in width, allowing to the rider agile and comfortable movements.



LOOSE LAYERS

The new "unlined" construction multilayer jackets are designed for achieving the best comfort and the best mobility for chest and arms, thanks to the reduction of friction between the components of the garment (shell-insert insulation-membrane).



RACING

Employment of cow leather for sporting purposes of kangaroo leather with a resistance to abrasion of more than 2000 Martyn Dayl cycles, more than 70kg/Newton tear resistance, no use of chemical products harmful for man, ex test (warm and cold), CE 1621-1 race use certification. To make a leather suit for track use 6 meters of cow leather (weight 5.5 kg), or 8 meters of kangaroo leather (weight 4.2kg) are needed.



REINFORCED THREAD

The seams reinforced with heavy duty yarns add durability to most abrasion and tension stressed parts of the garment.



FIT FOR LADY

Women's Spyke garments are created for the woman who does not want to quit her femininity, not even on two wheels. Thanks to the cut and the lines following feminine shapes, the adjustment velcro straps, the belts to enhance the waistline, but also more comfortable volumes in the breast area, Spyke women's garments dress riders in a comfortable and performing way, without giving up modern looks and maximum safety.



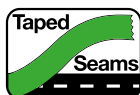
THERMAL

Spyke Thermal clothing offers warmth and comfort without adding weight. Lightness and freedom of movement are the key features of the products having the Thermal insulation technology, which, thanks to special paddings, grant a high resistance and a huge breathability, without absorbing water or humidity. The low heat transmission coefficient allows retaining temperature heat with even better features than wool.



REMOVABLE IN LINEAR

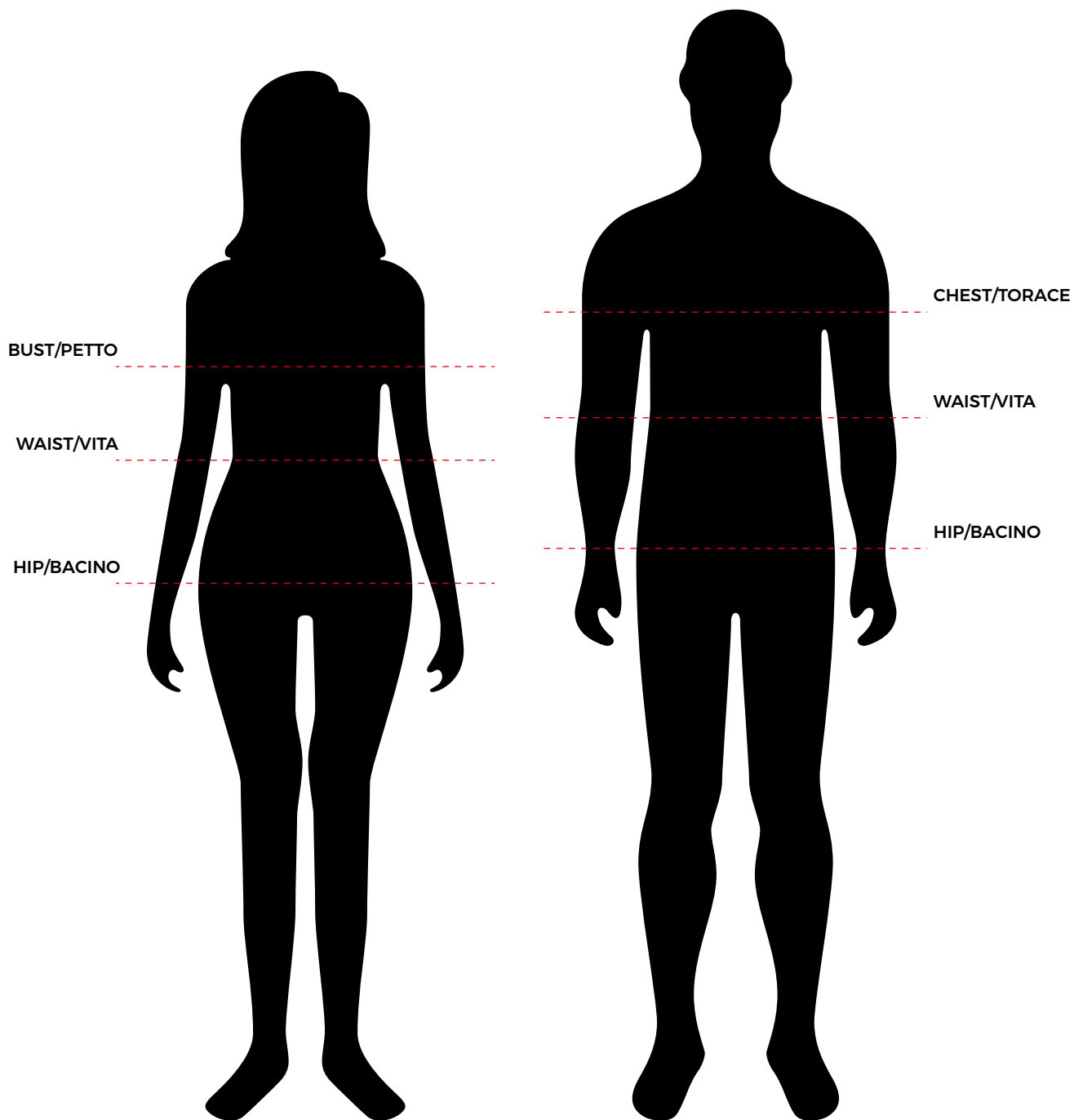
The inner layers can be removed and washed separately for a correct hygiene of the garment.



TAPED SEAMS

The seams of the Dryteco equipped garments are thermal-taped to prevent even the tiniest penetration of water.

SIZE CHART



MAN

SIZES/TAGLIE	ITA	46	48	50	52	54	56	58	60	62
	DE	46	48	50	52	54	56	58	60	62
	FR	46	48	50	52	54	56	58	60	62
	UK	36	38	40	42	44	46	48	50	52
	USA	36	38	40	42	44	46	48	50	52
	INTERNATIONAL	M	M	L	XL	XL	XXL	3XL	3XL	4XL

FIT/VESTIBILITÀ (cm)	CHEST/TORACE	90-94	94-98	98-102	102-106	106-110	110-114	114-118	118-122	122-126
	WAIST/VITA	80-84	84-88	88-92	92-96	96-100	100-104	104-108	108-112	112-116
	HIP/BACINO	90-94	94-98	98-102	102-106	106-110	110-114	114-118	118-122	122-126
	HEIGHT/ALTEZZA	164-170	167-173	170-176	173-179	176-182	179-185	180-185	181-186	181-186

WOMAN

SIZES/TAGLIE	ITA	38	40	42	44	46	48	50	52	-
	DE	32	34	36	38	40	42	44	46	-
	FR	34	36	38	40	42	44	46	48	-
	UK	6	8	10	12	14	16	18	20	-
	USA	4	6	8	10	12	14	16	18	-
	INTERNATIONAL	XS	XS	S	M	M	L	XL	XL	-

FIT/VESTIBILITÀ (cm)	BUST/PETTO	78-82	82-86	86-90	90-94	94-98	98-102	102-106	106-110	-
	WAIST/VITA	62-66	66-70	70-74	74-78	78-82	82-86	86-90	90-94	-
	HIP/BACINO	82-86	86-90	90-94	94-98	98-102	102-106	106-110	110-114	-
	HEIGHT/ALTEZZA	152-158	155-161	158-164	161-167	164-170	167-173	169-175	170-176	-

UNISEX

*	ITA	40/44	-	-	48/50	-	-	52/54	-	-
	INTERNATIONAL	XS/S	-	-	M/L	-	-	XL/2XL	-	-

GLOVES

*	INTERNATIONAL	XXS	XS	S	M	L	XL	XXL	-	-
---	----------------------	------------	-----------	----------	----------	----------	-----------	------------	---	---

‡	HAND/MANO	18,2	19,4	20,6	21,8	23	24,2	25,4	-	-
---	------------------	------	------	------	------	----	------	------	---	---

* SIZES/TAGLIE
** FIT/VESTIBILITÀ (cm)



NOTEBOOK

A series of horizontal dotted lines for writing, filling most of the page.

INDEX

10	ASSEN RACE	110160
13	ASSEN SPORT	110260
80	BIARRITZ	131016
81	BIARRITZ VENTED	131017
11	BLASTER GT-R	110155
15	BLASTER GT-S	110250
16	BLASTER GT-S LADY	110251
74	BOMBER ONE	170605
53	BORA 2 PANT	120725A
28	CORSA GT-R	1206C4
26	CORSA GT-R DRY TECNO	1206C2
25	DAYTONA DRY TECNO SPORT	120640
39	EVERGLADE DRY TECNO MAN	120551
49	EVERGLADE DRY TECNO MAN	120751
51	EVONRAY 2 DRY TECNO LADY	120741
50	EVONRAY 2 DRY TECNO MAN	120740
19	IMOLA EVO	110362
14	IMOLA SPORT	110262
18	JEREZ EVO	110359
86	KIT ELBOW PROTECTOR	141153
86	KIT KNEE PROTECTOR (WITH VELCRO)	141154
85	KIT SHOULDER MIS.1	141155
85	KIT SHOULDER MIS.2	141156
23	LF PANTS LADY	110417
22	LF PANTS MAN	110416
21	LF SLIDER PANTS	110415
9	LOSAIL RACE	110161
44	LUFT MAN	120686
66	MILANO LADY	110343
65	MILANO MAN	110342
8	MUGELLO KANGAROO MIX RACE	110101
43	MYSTRAAL AIR	1206B3
84	NEW CE SOFT PROTECTOR MIS.1	141131
84	NEW CE SOFT PROTECTOR MIS.2	141132
76	OUTSIDER	120760
38	PATHFINDER EXTREME DRY TECNO	120550
77	RACER	120761
48	RADOM 2 DRY TECNO MAN	120750
55	RALLY 2 DRY TECNO	131031
64	RIDE LADY	110341
63	RIDE MAN	110340
71	RIDER SUMMER GT LADY	120611
70	RIDER SUMMER GT MAN	120610
87	SLIDERS FOR RAIN RACE	141123
46	SOFTSHELL COMBO	120620
34	SPORT SHORT AIR	131033
33	SPORT TOURING LEATHER	130963
73	STREET	170604
62	STRIPE GP2 LADY	110361
61	STRIPE GP2 MAN	110360
88	SUSPENDERS	141110
30	TECH PRO	130964
31	TECH RACE	130965
35	TECH SHORT	131030
32	TECH SPORT	130966
68	TENACY R2 LADY	110390
67	TENACY R2 MAN	110389
57	TOURING 2 DRY TECNO LADY	131036
56	TOURING 2 DRY TECNO MAN	131032
41	TOURING AIR GT-2	120683
88	TRACK SLIDER RACE SUIT	141124
87	TRACK SLIDER RACE SUIT 2 PIECE	141121
78	TRAVELLER	120762
82	URBAN SOFTSHELL	131015
58	VILLE 2 DRY TECNO MAN	131034

All products and their related technical data, as well as illustrations, advice and information available through this catalogue are provided on an "as it is, as available" basis without warranties of any kind, either expressed or implied. Such information is updated as of the print date and has a mere indicative value and is not binding for Spyke Technology. Spyke Technology will not be liable for any mistakes in printing and/or translation. This catalogue may be accessed by users internationally and may contain references to products that are not available and/or whose features may vary in accordance with local laws. Not all colours and/or versions are available in all countries. Spyke Technology reserves the right to make changes and improvements to any product without any obligation to give prior notice or to carry out such changes to products already sold. Product delivery time varies depending on product availability, production schedule and when the order is placed. Further product specifications are indicated on the packaging or attached on the product itself. Technical apparel usage does not eliminate risk of injury during an accident. Please be careful while driving. Reproduction rights of the photographs represented in this catalogue belong to Spyke Technology. Any reproduction of these photographs without the explicit permission of the latter is strictly prohibited.

Copyright 2018 Spyke Technology.



SPYKE INTERNATIONAL

Piazza della Vittoria 3
36065 Mussolente (VI)
Italia - Italy

Mail info@spyke.it
Web spyke.it

 facebook.com/spyke.social

